

TOP 50 **Tiny Home** Plans



CONTENTS

| | |
|---|----|
| 1. Tiny Home Plan: The Santa Cruz..... | 1 |
| 2. Tiny Home Plan: A modern cottage | 3 |
| 3. Tiny Home Plan: The San Rafael | 5 |
| 4. Tiny Home Plan: The Handsome Cottage | 6 |
| 5. Tiny Home Plan: The Rustic-Elegant studio | 7 |
| 6. Tiny Home Plan: A Spacious Studio | 9 |
| 7. Tiny Home Plan: A Beachfront Cottage..... | 11 |
| 8. Tiny Home Plan: A 404 Sq.Ft Home..... | 12 |
| 9. Tiny Home Plan: A Wonderful Little Cottage..... | 14 |
| 10. Tiny Home Plan: A 950 Sq.Ft Home | 16 |
| 11. Tiny Home Plan: The Willow | 18 |
| 12. Tiny Home Plan: A 843 Sq.Ft Home..... | 20 |
| 13. Tiny Home Plan: A 891 Sq.Ft Home..... | 22 |
| 14. Tiny Home Plan: A 704 Sq.Ft All Season Home | 24 |
| 15. Tiny Home Plan: The Olive St..... | 26 |
| 16. Tiny Home Plan: A 538 Sq.Ft Plan | 28 |
| 17. Tiny Home Plan: A 525 Sq.Ft Plan | 29 |
| 18. Tiny Home Plan: A 388 Sq.Ft Plan | 31 |
| 19. Tiny Home Plan: A 1000 Sq.Ft Plan | 33 |
| 20. Tiny Home Plan: A 672 Sq.Ft Coastal Style | 34 |
| 21. Tiny Home Plan: The Elinor St. | 35 |
| 22. Tiny Home Plan: A 557 Sq.Ft Plan | 36 |
| 23. Tiny Home Plan: A 640 Sq.Ft Modern Cabin | 38 |
| 24. Tiny Home Plan: The Tower Studio | 39 |
| 25. Tiny Home Plan: A 777 Sq.Ft Plan | 41 |
| 26. Tiny Home Plan: A 544 Sq.Ft Plan | 43 |
| 27. Tiny Home Plan: A 290 Sq.Ft Plan | 44 |
| 28. Tiny Home Plan: A 697 Sq.Ft Cottage..... | 46 |
| 29. Tiny Home Plan: A 750 Sq.Ft Cottage | 48 |
| 30. Tiny Home Plan: A 261 Sq.Ft Plan | 50 |
| 31. Tiny Home Plan: A 432 Sq.Ft Modern Cabin | 52 |
| 32. Tiny Home Plan: A 525 Sq.Ft Rustic Plan | 53 |
| 33. Tiny Home Plan: A 832 Sq.Ft Cottage..... | 54 |
| 34. Tiny Home Plan: A Contemporary 860 Sq.Ft Cottage..... | 55 |
| 35. Tiny Home Plan: The Desert Shelter | 56 |
| 36. Tiny Home Plan: A 320 Sq.Ft Micro-cottage | 57 |
| 37. Tiny Home Plan: The Gifford..... | 58 |
| 38. Tiny Home Plan: The Traditional House Plan..... | 60 |
| 39. Tiny Home Plan: A 972 Sq.Ft Cottage | 62 |
| 40. Tiny Home Plan: A 98 Sq.Ft Home..... | 64 |
| 41. Tiny Home Plan: The Beavan..... | 66 |
| 42. Tiny Home Plan: A 610 Sq.Ft Home | 68 |
| 43. Tiny Home Plan: A 370 Sq.Ft Portable House | 70 |
| 44. Tiny Home Plan: A 356 Sq.Ft Tiny Bungalow | 71 |
| 45. Tiny Home Plan: The Santa Barbara | 73 |
| 46. Tiny Home Plan: A 356 Sq.Ft Cozy Cottage..... | 75 |
| 47. Tiny Home Plan: A 584 sq ft Modern Home..... | 77 |
| 48. Tiny Home Plan: The Forest Shelter | 79 |
| 49. Tiny Home Plan: A 261 sq ft Cabin | 81 |
| 50. Tiny Home Plan: The Jungle Shelter | 82 |

1. Tiny Home Plan: The Santa Cruz

By: The Homestead Partners



The Santa Cruz is one of six gorgeous little 400-square-foot houses in the California Collection created by The Homestead Partners. Each house has a full kitchen and bathroom, private bedroom with space for at least a queen-size bed, living/dining/kitchen that opens to an outdoor dining patio or terrace, and plenty of storage.

Interior Features 399 square feet
Open living/dining room and full kitchen, with sliding doors opening to raised side patio, and entry door opening to raised front porch
Cathedral ceilings with exposed rafters throughout
Full bathroom
Space for compact washer/dryer
Walk-in closet
Bedroom sized for a queen bed, with built-in storage, and sliding door opening to side porch

Exterior Features 445 square feet
Raised open-air porch at entry
Covered raised side porch, with built-in grill
Total Footprint 844 square feet.

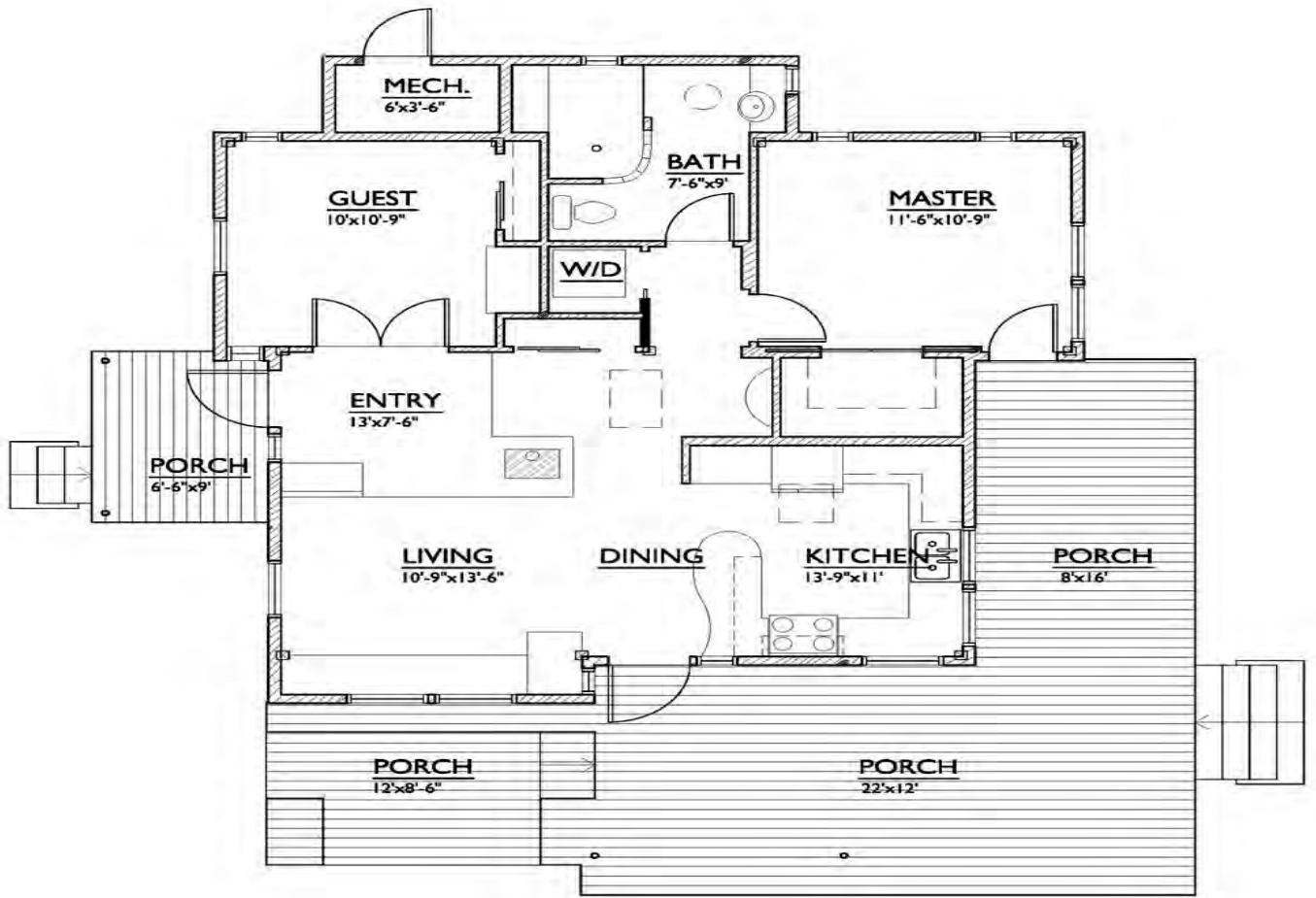


2. Tiny Home Plan: A modern cottage

By: [Nir Pearlson](#)



A modern cottage plan where adventuresome, playful design makes the most of a small space with private and public areas that connect elegantly to the outdoors. This 2 bedroom plan won Fine Homebuilding Magazine's 2013 Small Home of the Year Award. The magazine recognized the design “for its shared spaces and connections to the outdoors that make it seem larger than its physical boundaries...” The layout is mostly one open space containing kitchen and living-dining area connecting to a large wrap-around deck (photos by Mike Dean). Key elements define individual “rooms” without separating one from another -- like the kitchen peninsula and the window seat -- making the main space feel larger than it is. Nir designed the house to be energy-wise, with rigid foam insulation in walls and roof and separate photo-voltaic arrays for generating electricity and hot water. The design was also a finalist in the 2014 HOWIE Awards sponsored by Houseplans.com. It’s definitely the little award-winning cottage that could!.



3. Tiny Home Plan: The San Rafael

By: [The Homestead Partners](#)



The San Rafael is one of six gorgeous little 400-square-foot houses in the California Collection created by The Homestead Partners. Each house has a full kitchen and bathroom, and floor-to-ceiling windows look became thousands of sprivate bedroom with space for at least a queen-size bed, living/dining/kitchen that opens to an outdoor dining patio or terrace, and plenty of storage. Big enough to have a friend over. Just make sure you're in love with them first. There was more than one way to translate the ranch house into housing during the 1950s. The peaked roof subdivision tract homes, the best of which are still fabulous.



4. Tiny Home Plan: The Handsome Cottage

By: Cathy Schwabe, Architect



Smart design gets the most out of a small footprint. Big windows, high ceilings, useful built-ins, and a huge deck make the space comfortable and well connected to the outdoors. - Fine Homebuilding Magazine This handsome cottage plan by Bay Area architect Cathy Schwabe is only 840 square feet but feels much larger thanks to a wide deck, soaring ceilings, large windows, and strategically placed built-ins.

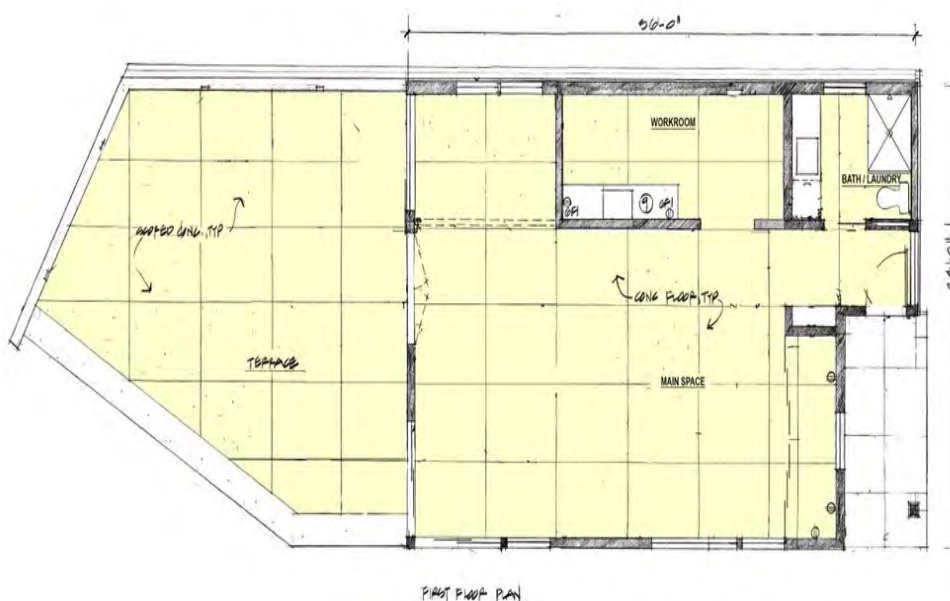


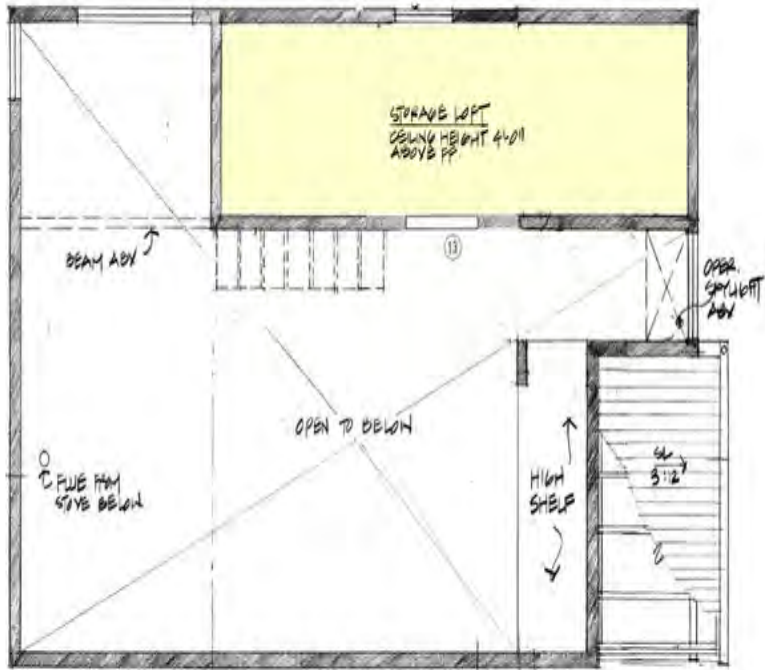
5. Tiny Home Plan: The Rustic-Elegant studio

By: Cathy Schwabe, Architect



This rustic-elegant, contemporary, 864 sq. ft. studio offers a soaring main living area flooded with natural light. Several smaller secondary spaces open off it. The workroom is easy to convert into a kitchen. Handsome barn doors connect the workroom to the living area, giving it a kind of stage presence. A study alcove is hidden behind more sliding doors. There is a storage /bunk room upstairs. This design would make a great backyard cottage, in-law unit, or wee





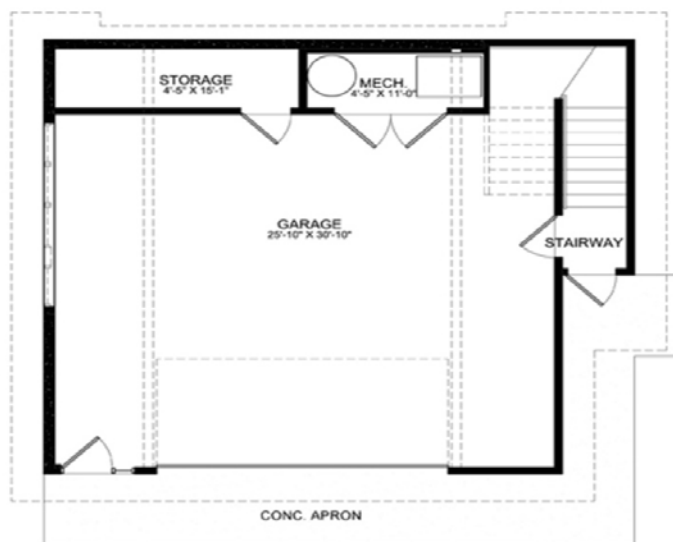
STORAGE LOFT PLAN

6. Tiny Home Plan: A Spacious Studio

By: Coates Design, Inc.



You'll enjoy the open plan of this spacious Studio above the Garage. The upper level features a loft like studio space complete with a kitchenette, bathroom, and two adjacent offices or bedrooms. The large expanse of windows extends your gaze to the outdoors as you feel the warmth of the illuminated skylights above. Below the garage is practical to the max with ample space for two cars and separate rooms for the mechanical room and storage.



MAIN LEVEL PLAN



UPPER LEVEL PLAN

7. Tiny Home Plan: A Beachfront Cottage

By: Bruce B Tolar



The expansive porches help make the modest cottage feel larger than it is and enhance its functionality. The design is smart for flood-prone areas. - Fine Homebuilding Magazine Designed as a beachfront cottage this plan is easily adapted to small urban lots and wilderness locations. This 2 bedroom 1 bath plan features cathedral ceilings in the living/kitchen space. With a spacious front porch and large side and rear decks opportunities for outdoor living and views are enhanced.

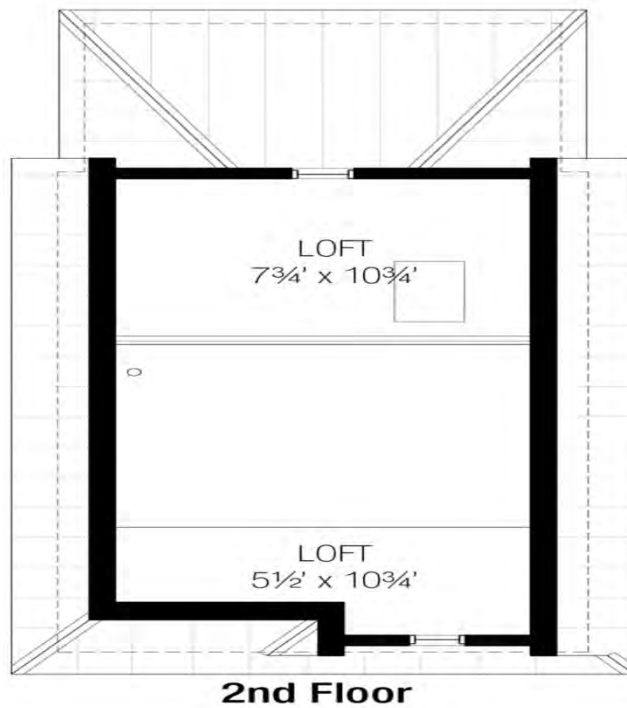
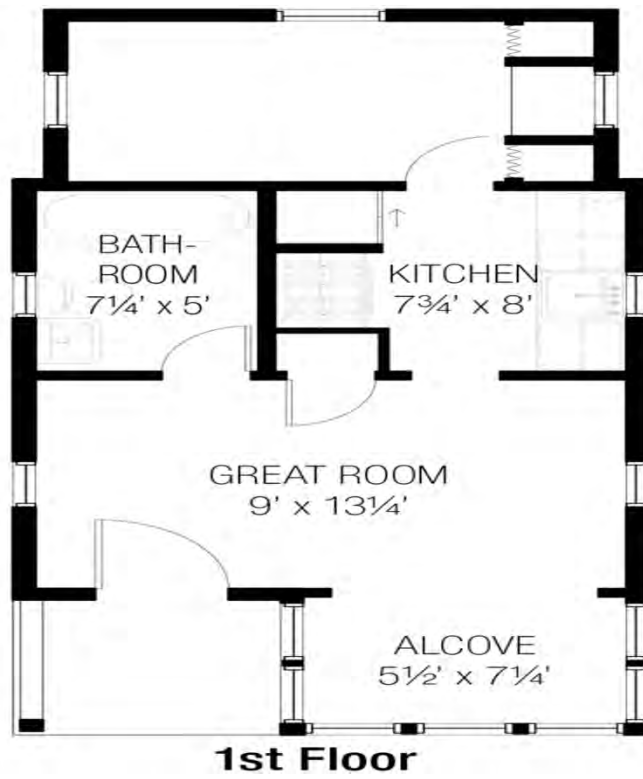


8. Tiny Home Plan: A 404 Sq.Ft Home

By: [Tumbleweed Tiny House Company](#)



This tiny home features a bump-out on the front that can be used as a sitting area or a sleeping area. It is large enough to fit a Queen size bed. There are 2 versions of this home: this design measuring 404 square feet, and a 2nd studio version totalling 310 square feet. The plans come with an option for a full loft over the great room, kitchen and bathroom, or a 1/2 loft with a cathedral ceiling over the great room. The kitchen maximizes space and includes a dishwasher, full size range with oven, and built in microwave. The tank-less on demand water heater ensures that you never run out of hot water, and tucks away completely out of view. A small fireplace is tucked nicely in the corner of the great room. A washer/dryer combo in the kitchen makes this home complete. We do not count the loft as square footage in this house because at its peak, it is 6'8" tall, and therefore it does not officially qualify as a habitable room. Subsequently, the loft adds over 100 feet of usable space and it is accessed by a drop down stair ladder.

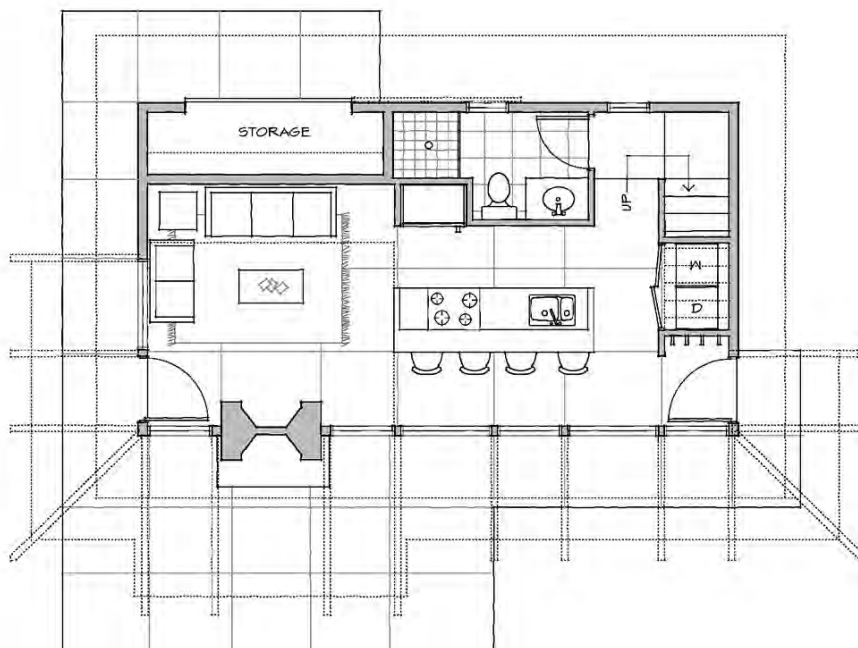


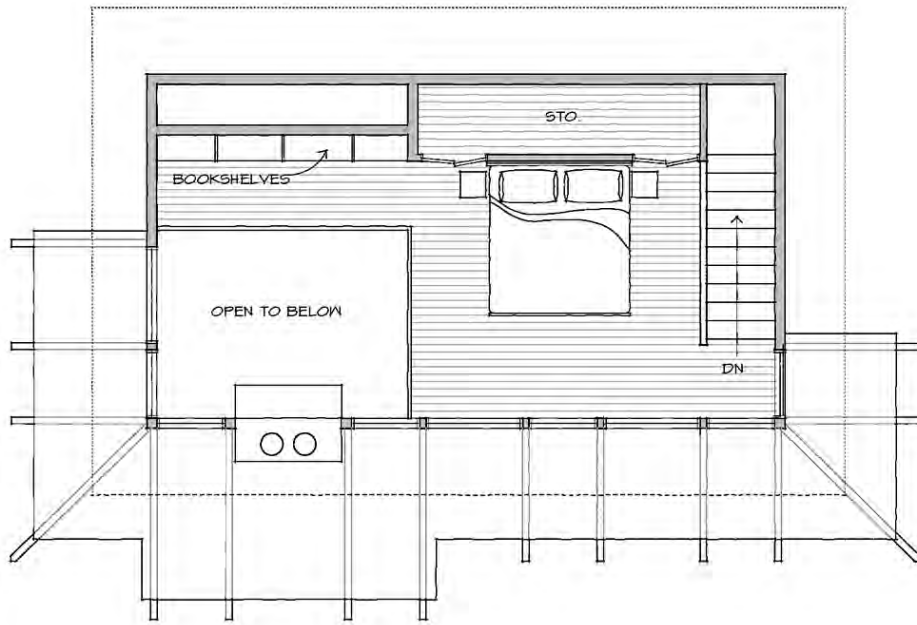
9. Tiny Home Plan: A Wonderful Little Cottage

By: Peter Brachvogel, AIA and Stella Carosso



This residence is full of expanses of operable glass to take in a scenic view. A sleeping loft is located above the bath and kitchen/dining area and is open to the cozy living space below. The large glazed canopy and outdoor fireplace extend the season of outdoor living opportunities. This is a wonderful little cottage for a couple, especially for a lot with a view. If a second bedroom is required it would be fairly easy to add it to the back of the house. Room Dimensions: Living Room: 11'6" x 11'10" Kitchen: 9'9" x 9'6" Bath: 5'2" x 9'4" Laundry: 4'2" x 3'0" Bedroom: 11'6" x 12'6".



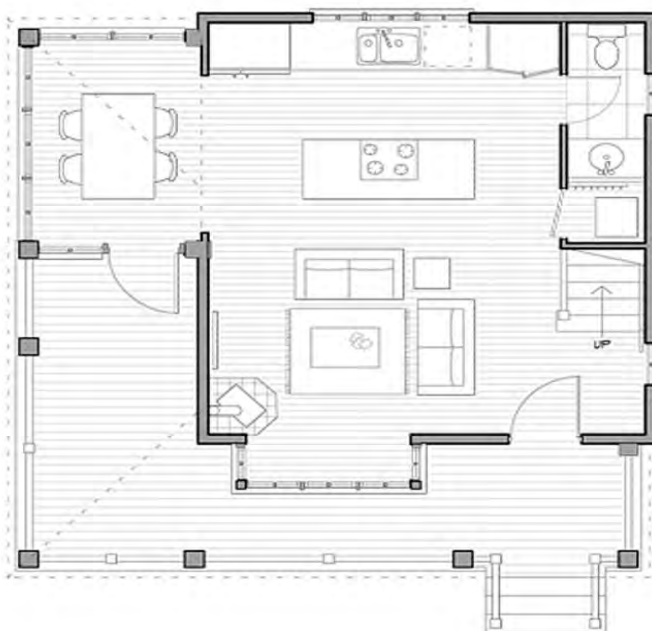


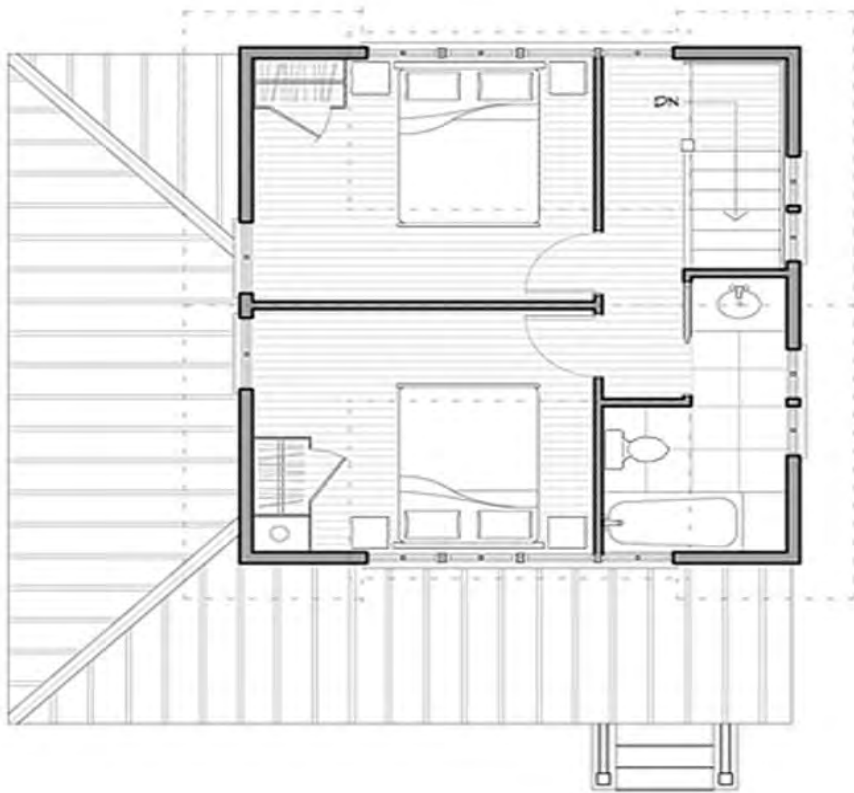
10. Tiny Home Plan: A 950 Sq.Ft Home

By: [Peter Brachvogel, AIA and Stella Carosso](#)



This floor plan makes the most of a small footprint. The generous wraparound porch adds a sense of roominess. Classic exterior details, brackets for instance, reinforce the traditional style of the home. - Fine Homebuilding Magazine The Woodland - This two bedroom charmer Incorporates great room living with a sun room dining space. Large dormers bring in abundant light into the upstairs bedrooms. Enjoy the wrap around covered deck from either the main entry or the dining area.



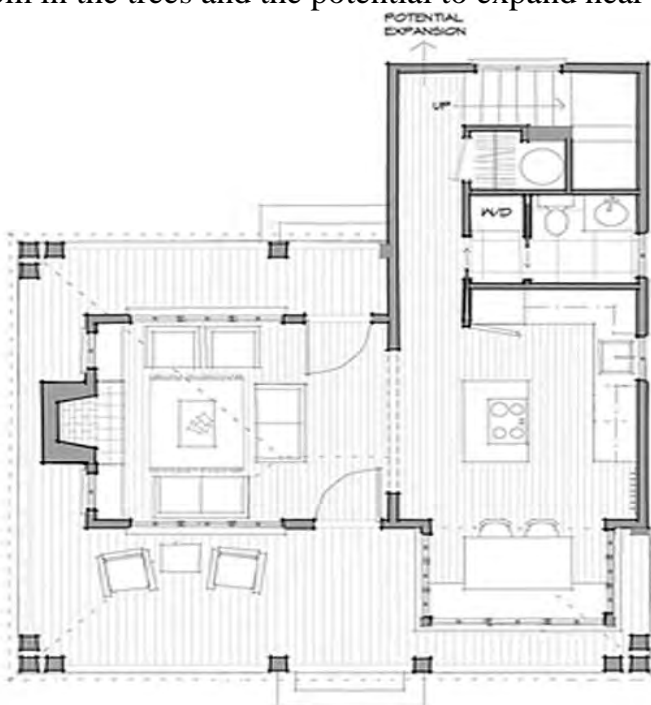


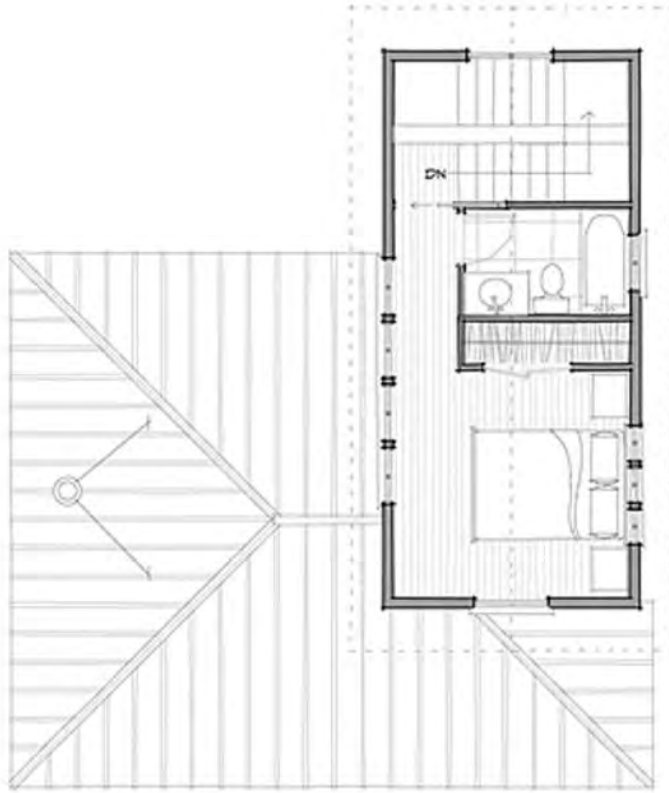
11. Tiny Home Plan: The Willow

By: Peter Brachvogel, AIA and Stella Carosso



The living room benefits from excellent access to views and daylight, which helps make this small space feel bigger. The arrangement of the floor plan is smart, and oversized windows in the stairwell bring valuable light into the home. - Fine Homebuilding Magazine The Willow - The Willow's wrap around porch and walk-thru great room makes this house feel much larger than its modest size. This perfect starter house contains a fireplace, cozy dining nook, private bedroom in the trees and the potential to expand near the stair.



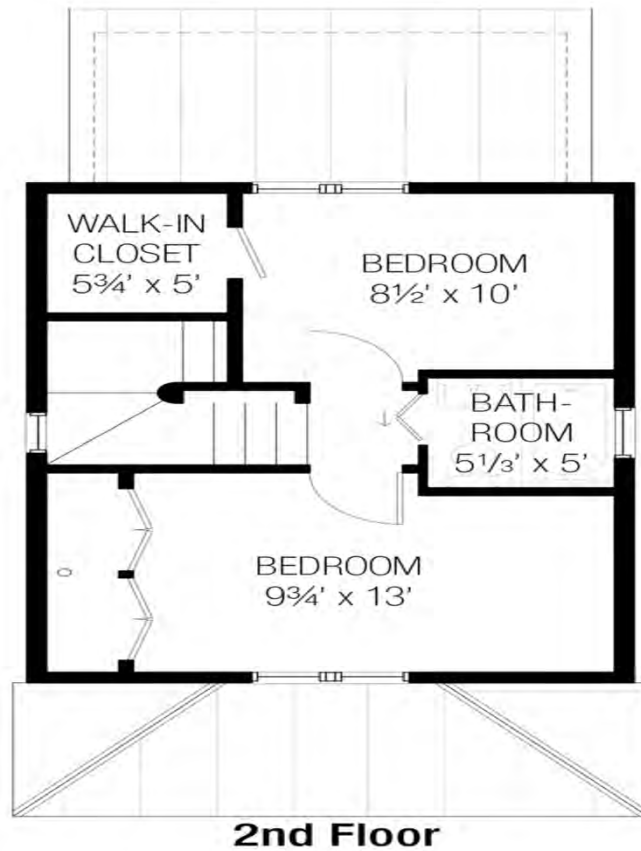


12. Tiny Home Plan: A 843 Sq.Ft Home

By: [Tumbleweed Tiny House Company](#)



This is one of Tumbleweed's largest homes. It can be built as a 3 bedroom, pictured below, or 2 bedroom house. The 3rd bedroom is an optional add-on that is on the first floor level. The top floor houses two additional bedrooms. Each story of the house is 7'6" tall at its peak. The upstairs bedrooms have sloped ceilings on the sides, and the closets are positioned in the lower ceiling space. This small house is designed to be built on a permanent foundation and comes with a post and pier foundation. However, it is possible to put this house on a slab foundation or even over a basement. The kitchen maximizes space and includes a dishwasher, full size range with oven, and built in microwave. The tank-less on demand water heater ensures that you never run out of hot water, and tucks away completely out of view. A stacking washer and dryer flank the kitchen. A small fireplace is tucked nicely in the corner of the great room.

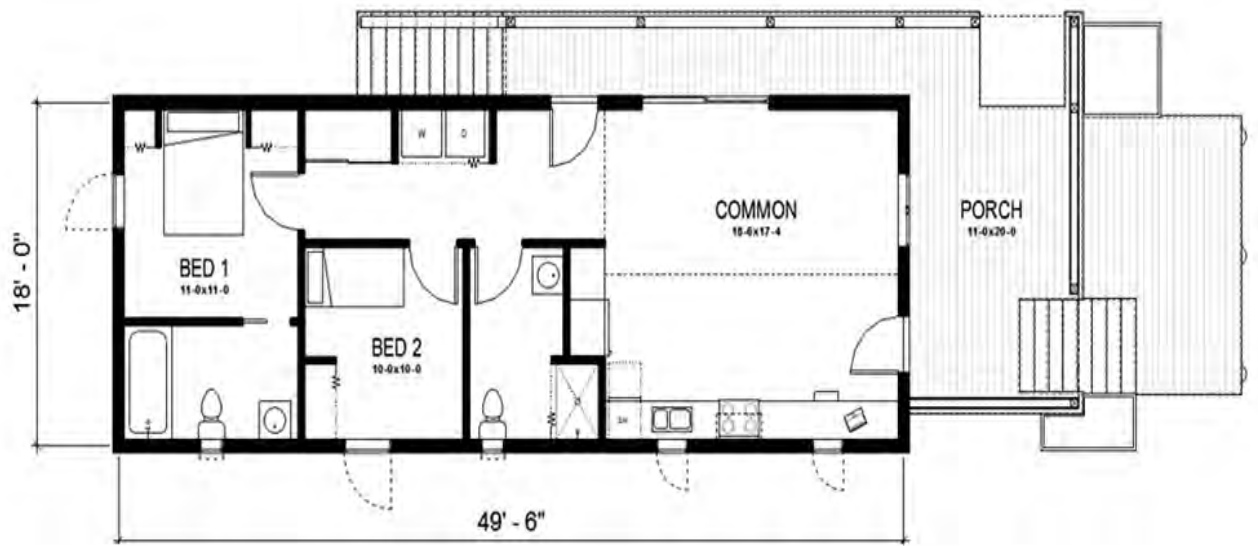


13. Tiny Home Plan: A 891 Sq.Ft Home

By: [FreeGreen](#)



This project presented an opportunity to introduce homeowners and the design community to combinations of ideas all aimed at making life better, easier, and more sustainable. Design ideas that embrace sustainability, accessibility, survivability, affordability, and community integration are employed into a series of design solutions that accomplish multiple goals. The outdoor space is not just a place of deck and patios; rather, the outdoor spaces are utilized to fulfill specific programmatic roles. The first platform raised off the sidewalk becomes an outdoor foyer. This buffer space would be great for catching some sun and enjoying a game of dominos or cards with a neighbor. It also acts as a buffer or foyer to the outdoor living room up above. Two large planters frame the space and help with the visual transition between the raised living spaces and the ground plane. The kitchen is large enough for preparing a large family meal while also size and budget appropriate for those whose common culinary efforts involve a microwave. The counter to the left of the stove serves as a “flex space” - it could be used as a desk or extra kitchen work surface. Consolidating the microwave, refrigerator, and an open pantry into a single wall makes it is easy to get food out of the refrigerator and into the microwave for a quick, hot meal.



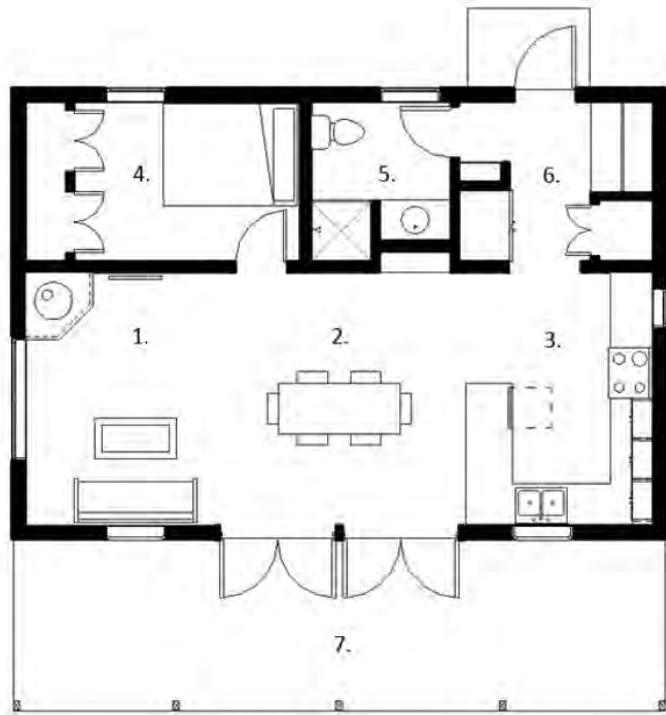
14. Tiny Home Plan: A 704 Sq.Ft All Season Home

By: [FreeGreen](#)



This cabin was designed with the rural lot in mind. It is a small home that maximizes space through an open floor plan and well organized spaces. Its materials and method of construction emphasize durability and energy efficiency. The metal roof, generous overhangs and crawl space foundation will ensure the structure will stand the test of time against the elements. The shell is constructed from R-Control Structural Insulated Panels (SIP's) which will provide super insulating qualities such that a wood burning stove may be the only required heat source. This design is perfect for a wooded lot, Lake House, summer camp, or any rural lot. Enjoy the sights, sounds and smells of the outdoors from the spectacular front porch of this charming cabin. A crawl space foundation was chosen for The Cabin to accommodate a rural lot where full basements and slab on grade are often not feasible. Wood windows will hold up well in climates with extreme exposures. Vertical cedar board siding is time tested exterior finish and can be painted any color or left raw to reflect rustic charm. If properly treated and maintained cedar will last many years. This cabin house plan's floor plan was developed to be both simple and functional. A large open and continuous area for cooking, living, and dining bring aspects of modern design into this rural setting.

- 1. Living 10'-3" x 12'-4"
- 2. Dining 10'-7" x 12'-4"
- 3. Kitchen 9'-10" x 12'-4"
- 4. Bed 13'-5" x 7'-9"
- 5. Bath 6'-9" x 7'-9"
- 6. Mud 7'-0" x 7'-9"
- 7. Porch 32'-0" x 7'-0"

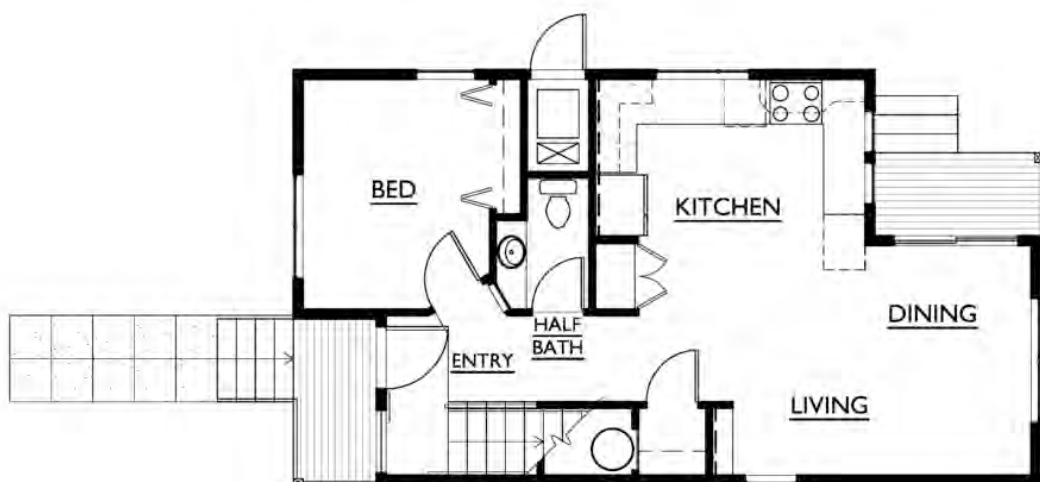


15. Tiny Home Plan: The Olive St

By: [Nir Pearlson](#)



Olive St. is a compact two-story home with 3 bedrooms and 2 baths. The front entry is below a bedroom balcony. The living-dining area and kitchen are at the back and open to to a small porch. One bedroom is on the ground floor; the master and one other bedroom -- which can function as a sitting room -- are on the second floor. The plan would work well as a backyard cottage or rental.



1st FLOOR PLAN



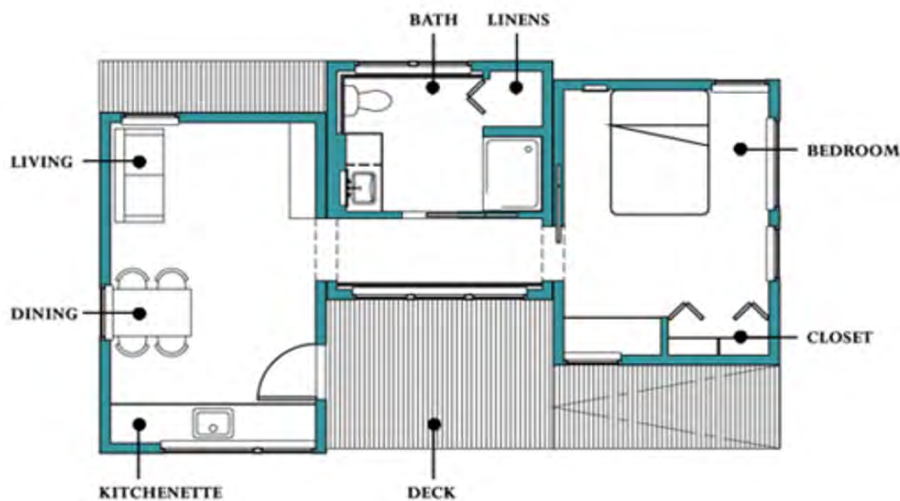
2nd FLOOR PLAN

16. Tiny Home Plan: A 538 Sq.Ft Plan

By: Carrie Shores



The Inspired In-Law Cottage is a sustainable, one-bedroom backyard cottage that supports senior independence through thoughtful design, making it possible for multiple generations to live together comfortably. It is available as a panelized systems, or a set of construction drawings for assembly by you or your contractor . Interior overall dimensions Living/Kitchenette: 17'-1" x 10'-6" Bathroom: 10'-0" x 7'-6" Bedroom: 14'-5" x 10'-6".

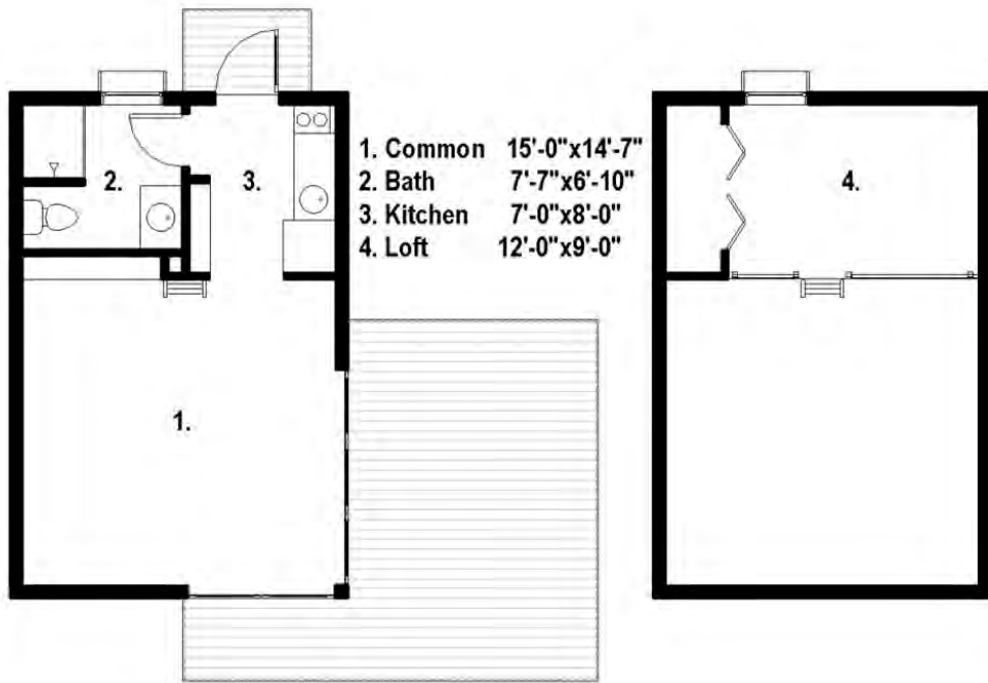


17. Tiny Home Plan: A 525 Sq.Ft Plan

By: [FreeGreen](#)



This Tiny House Plan has a bold modern aesthetic. Whether you choose to use our grey and stark or red and bright exterior options this plan will make a statement on your land. Also this plan can be built with or without a loft space creating unique options for single level living situations. We see this plan as a great modern cabin idea, or as a perfect fit in a small urban or in-fill situation where economy of size and accurate space to function ratios are key. This open floor plan represents a perfect use of efficient space. The common area acts as a palette for you to fill. Whether this home is being used as an office space, studio, apartment, or cabin, it is up to you on how to use this area to fit your needs. The kitchen is small but functional for those necessary energy breaks, or morning breakfast meals. The bathroom works well providing ample space for showering and freshening up. Finally, the loft space is a perfect crash pad with ample space for a bed, nightstand, or even as its own separate work space. This plan also has open space for a closet in the loft, and comes with an option to build the home without the loft for a simpler, single level living space.

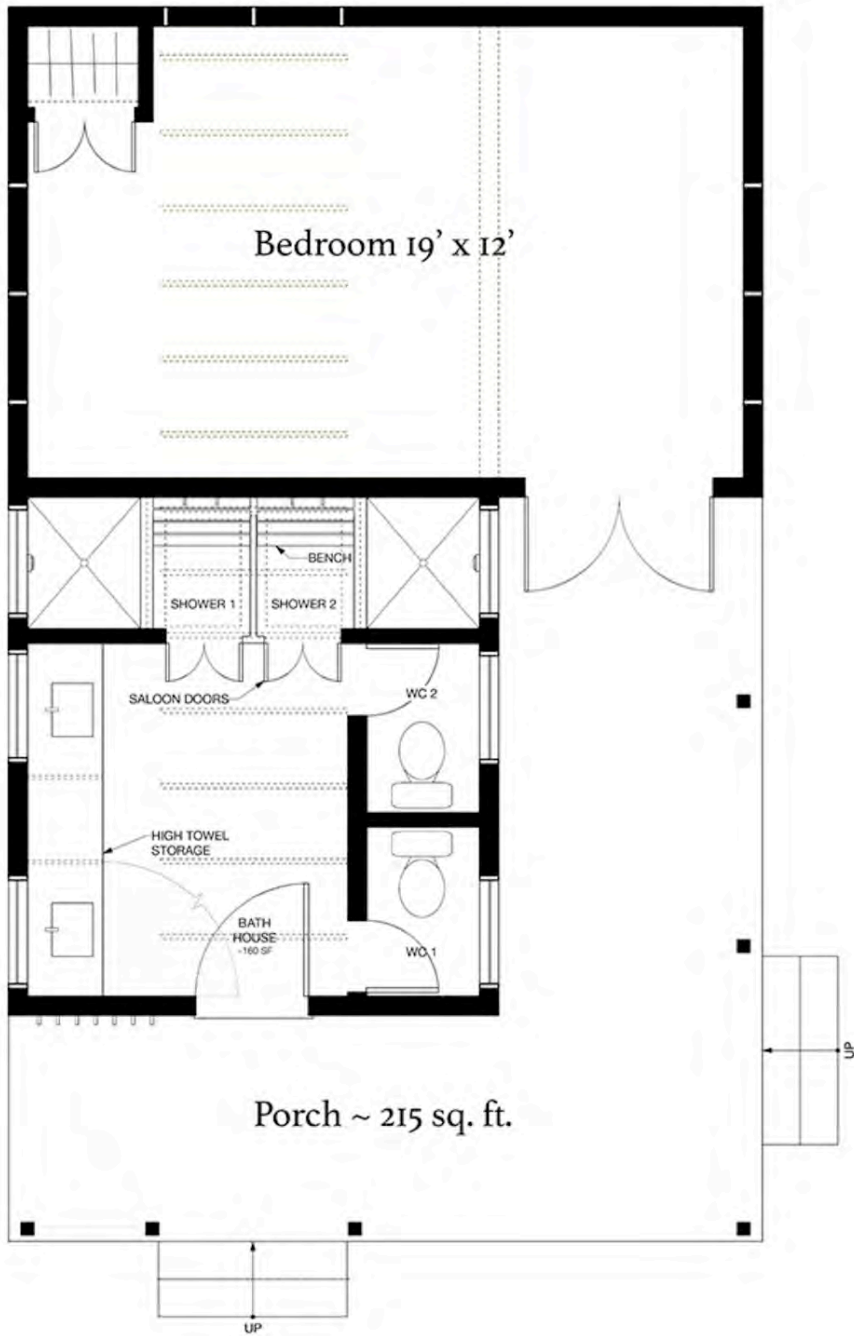


18. Tiny Home Plan: A 388 Sq.Ft Plan

By: [Richardson Architects](#)



The Farmhouse style Bath house/kitchen provides welcoming and comfortable amenities. The design concept embraces a fun, whimsical and practical character. Non-corrosive and wear-resistant materials were used including galvanized sheet metal, sealed board and batt siding, and painted plywood and MDO board. This design includes a bedroom off the porch at the back -- so this design could work well as an in-law or granny unit, or a backyard cottage for guesthouse. The second WC and Shower could be reclaimed for a tub if the bathroom does not do double duty as a pool changing / shower room.

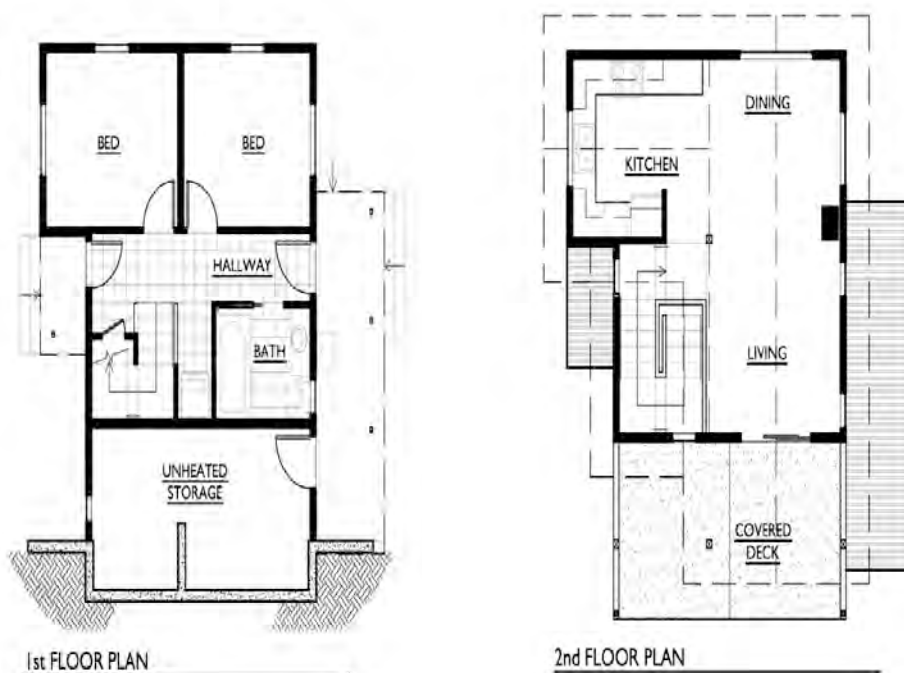


19. Tiny Home Plan: A 1000 Sq.Ft Plan

By: [Nir Pearlson](#)



Nir Pearlson designed this 1000 sq. foot two story home to function as a backyard cottage. Two bedrooms are on the lower level; kitchen and living space are on the floor above and open to the charming porch you see here. While this version of the cottage tucks into the toe of a slope, it could easily be adapted for other site conditions.



20. Tiny Home Plan: A 672 Sq.Ft Coastal Style

By: [Bruce B Tolar](#)



This 672 square foot coastal style 2 bedroom, 1 bath home plan takes advantage of a long narrow lot -- it's only 14 feet wide but includes a deep front porch. The L-shaped kitchen at one end of the living room opens to a side entry. There's a bunk room behind the kitchen and the master bedroom and bath are beyond that. This design would make a fine cabin or starter home



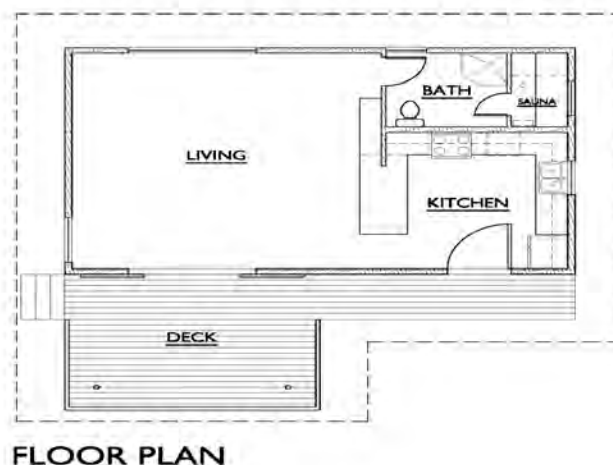
TOTAL SQUARE FOOTAGE - 672 SF

21. Tiny Home Plan: The Elinor St.

By: [Nir Pearlson](#)



"Elinor St." is a 640 sq. ft. studio with a U-shaped kitchen. Its shed roof lifts westward over high transom windows allowing tall storage areas, ample daylight, and views of sky and trees. The deep roof overhangs shelter the entries, a deck, and storage racks. The flexible interiors are comprised of a large multi-purpose room and a small adjoining room, allowing future conversion of the current shop and office into a small residence. The bathroom features a dry sauna, and a hot tub sits in the terraced garden between the two buildings. This design would work well as a backyard cottage for in-laws, extra guests, or as a rental.

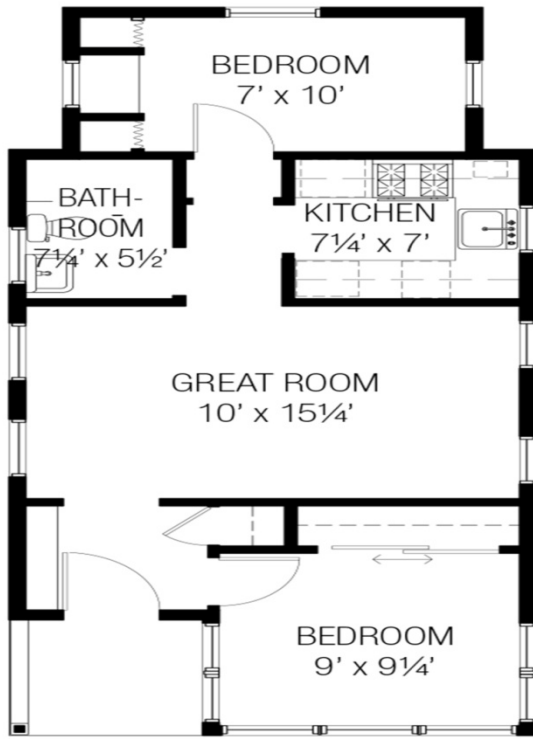


22. Tiny Home Plan: A 557 Sq.Ft Plan

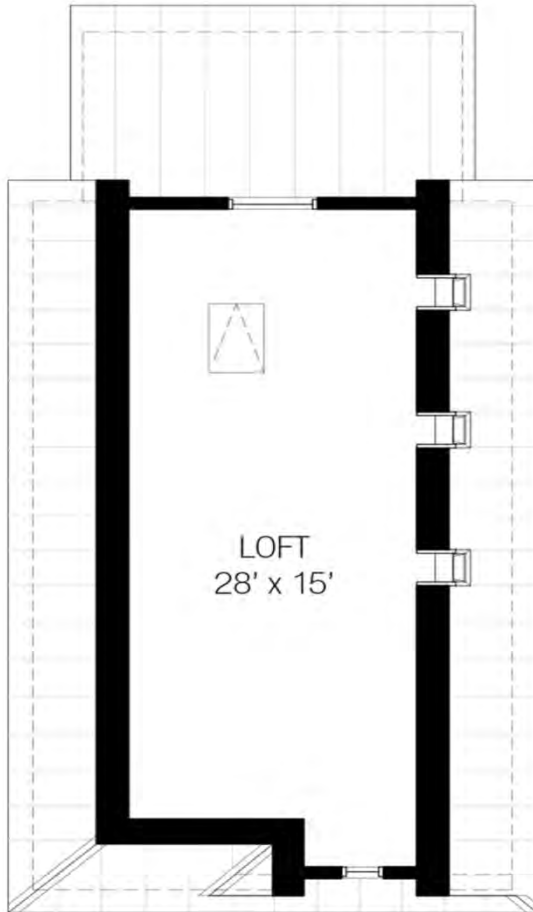
By: [Tumbleweed Tiny House Company](#)



This single story home has an option for 1 or 2 downstairs bedrooms (see 915-15 for the 1 bedroom option). Its simple design makes the house affordable to build, and full of light. The bedrooms have ample closet space, and the house makes use of its pitched roof for additional storage space or whatever else you choose to use it for. We do not list the upstairs square footage because, with so much sloped ceiling, it does not officially qualify as a habitable room. Subsequently, the loft is 6'8" tall over much of its space. The loft is accessed by a drop down stair ladder. The plans come with two options for the loft: Option 1: A full loft over the kitchen, bathroom, living room and front bedroom. The stair ladder is located in the kitchen. Option 2: Two lofts are split by a cathedral ceiling over the living room, and the lofts have a railing making the living room open. There are two stair ladders, one for each loft located in the kitchen and front bedroom. The kitchen maximizes space and includes a dishwasher, full size range with oven, and built in microwave. The two bedroom house has an under counter washer/dryer in the kitchen. You can choose to convert the closet in the back bedroom near the shower into a washer/dryer closet. This home is designed to be built on site and was not designed to be on wheels.



1st Floor



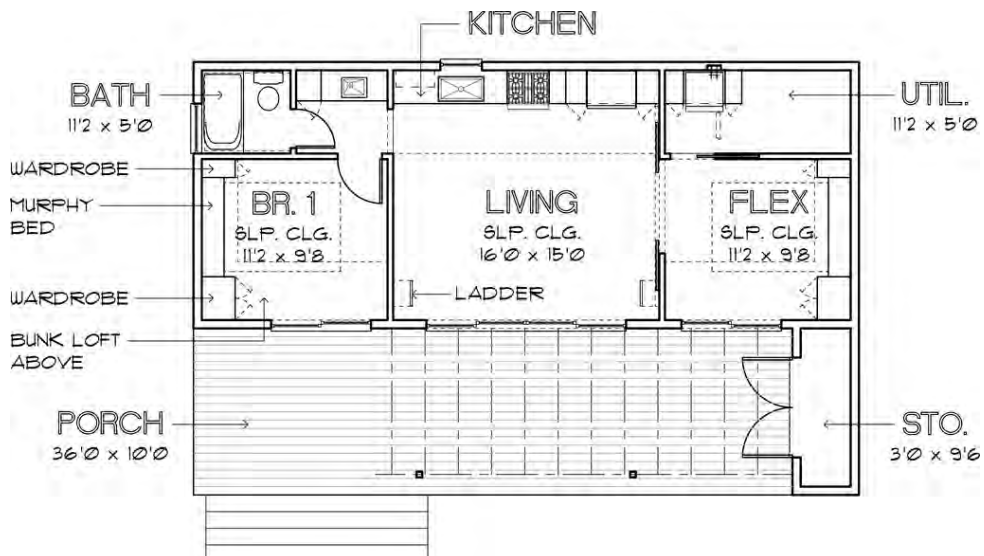
2nd Floor

23. Tiny Home Plan: A 640 Sq.Ft Modern Cabin

By: [David Cox](#)



Great for a weekend getaway retreat or the ultimate in downsizing. This simple modern cabin is designed for economy and simplicity of construction. With the two Bunk Lofts, sleeping for six can be provided in this small space if the Flex Room is built out as a second bedroom. If the intention is a more intimate getaway and the extra bedroom is not needed, the Flex Room can become a sitting area, dining area or study.

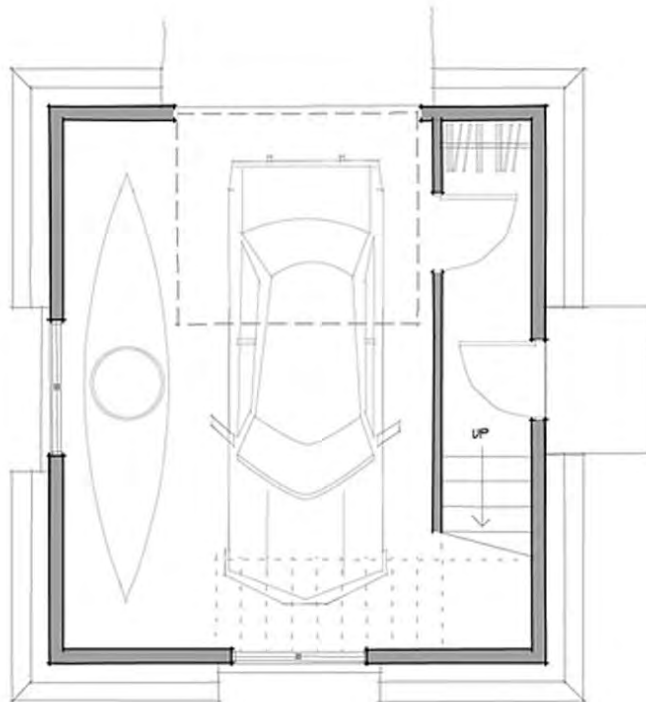


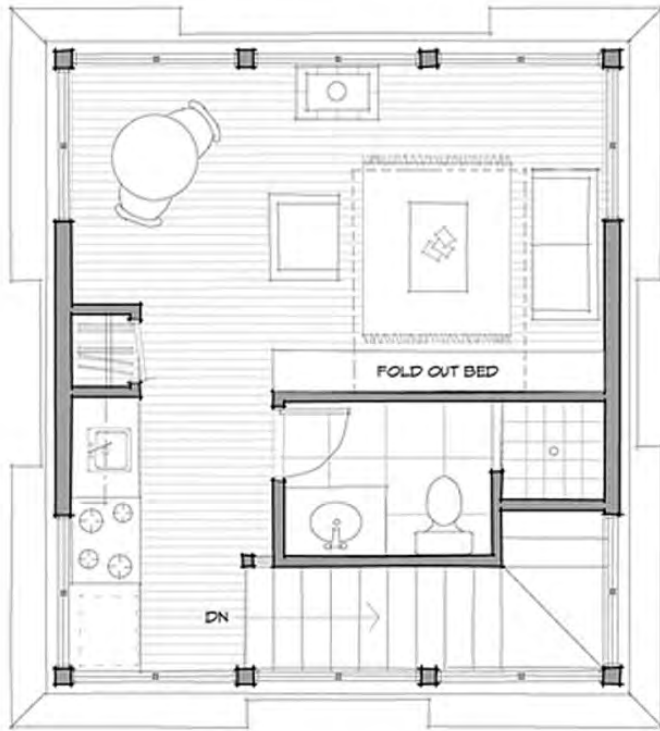
24. Tiny Home Plan: The Tower Studio

By: Peter Brachvogel, AIA and Stella Carosso



The Tower Studio is a small cabin with a garage on the lower level and a comfortable living unit on the second floor. A stove keeps things cozy while living above the fray. Oversee your land or enjoy a far vista from your own tower. This design could work well as a guest house or small starter.





25. Tiny Home Plan: A 777 Sq.Ft Plan

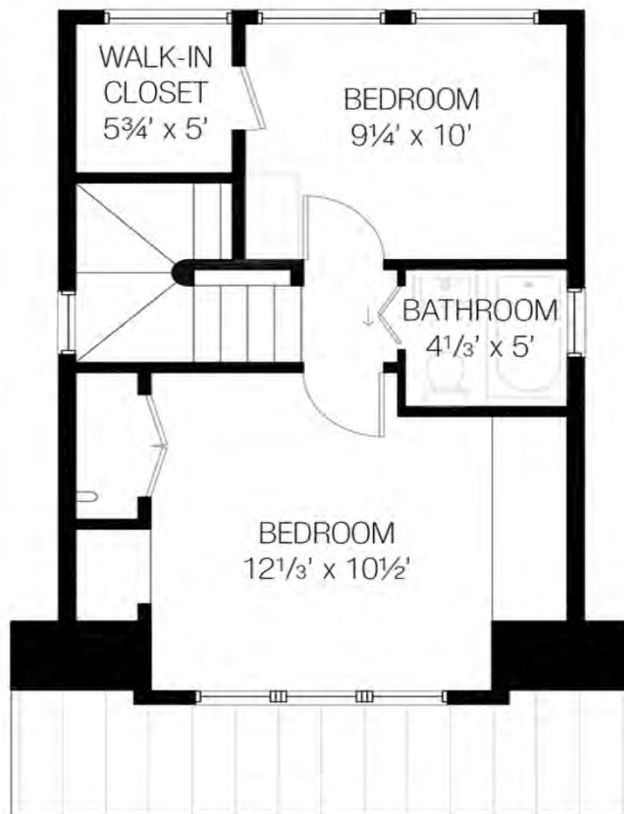
By: [Tumbleweed Tiny House Company](#)



This plan can be built as a 2 bedroom (777 sq. ft) or 3 bedroom (874 sq. ft) house. The 3rd bedroom is an optional add-on bedroom that is on the first floor level. The top floor houses two additional bedrooms. Each story of the house is 7'6" tall at its peak. The upstairs bedrooms have sloped ceilings on the sides, and the closets are positioned in the lower ceiling space. The kitchen maximizes space and includes a dishwasher, full size range with oven, and built in microwave. The tank-less on demand water heater ensures that you never run out of hot water, and tucks away completely out of view. A stacking washer and dryer flank the kitchen. A small fireplace is tucked nicely in the corner of the great room. This house is not designed to be portable and comes with a post and pier foundation. However, it is possible to put this house on a slab foundation or even over a basement.



1st Floor



2nd Floor

26. Tiny Home Plan: A 544 Sq.Ft Plan

By: [Katrina Cottage Designers](#)



Designed By Marianne Cusato Compact and efficiently planned, this 2 bedroom cottage is perfectly sized to sit on the back of a lot as a guest house, or clustered with other cottages to create small villages.



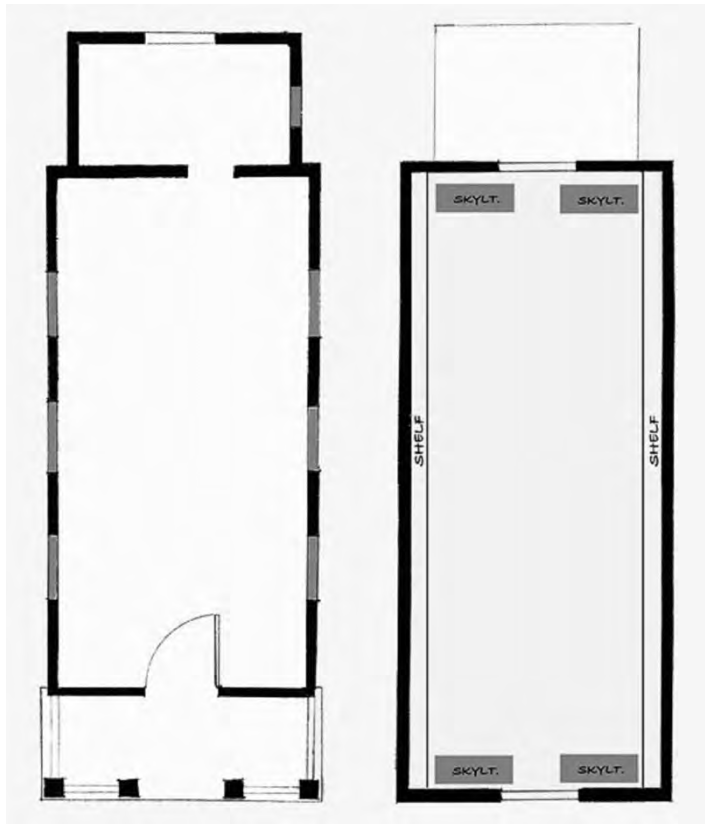
27. Tiny Home Plan: A 290 Sq.Ft Plan

By: Four Lights Tiny House Company



At 262 square feet downstairs and an additional 250 square feet for proposed loft space, it's nearly three times the size. Among other features, the Marmara allows for the finished design to contain a full-sized bed downstairs, along with a kitchen, large washroom, a great room with a cathedral ceiling, and more than 70 square feet of storage. There are two sleeping/storage lofts to accommodate four occupants comfortably and/or a lot of surplus storage.



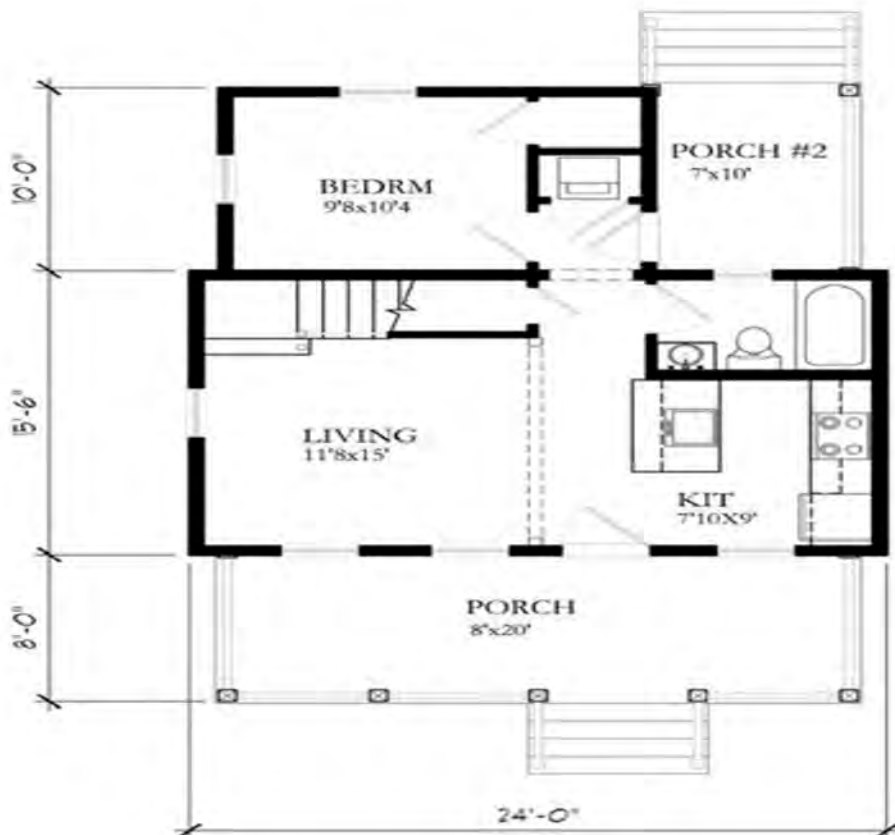


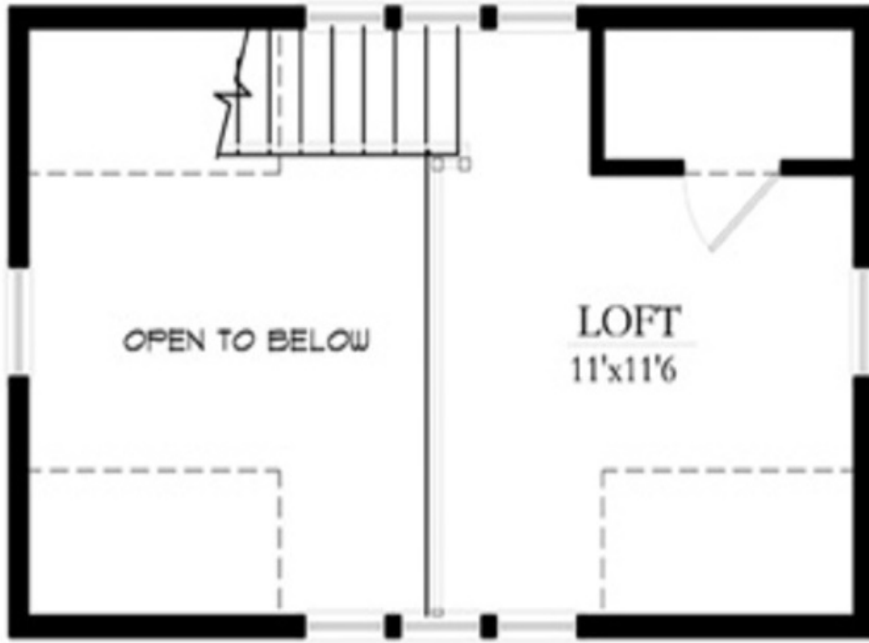
28. Tiny Home Plan: A 697 Sq.Ft Cottage

By: [Katrina Cottage Designers](#)



Designed By Eric Moser A vaulted ceiling in the living room and sleeping loft define the open feeling of this plan. The generous front porch allows the house to expand in good weather. This cottage design is ideal for a starter house or vacation cabin.



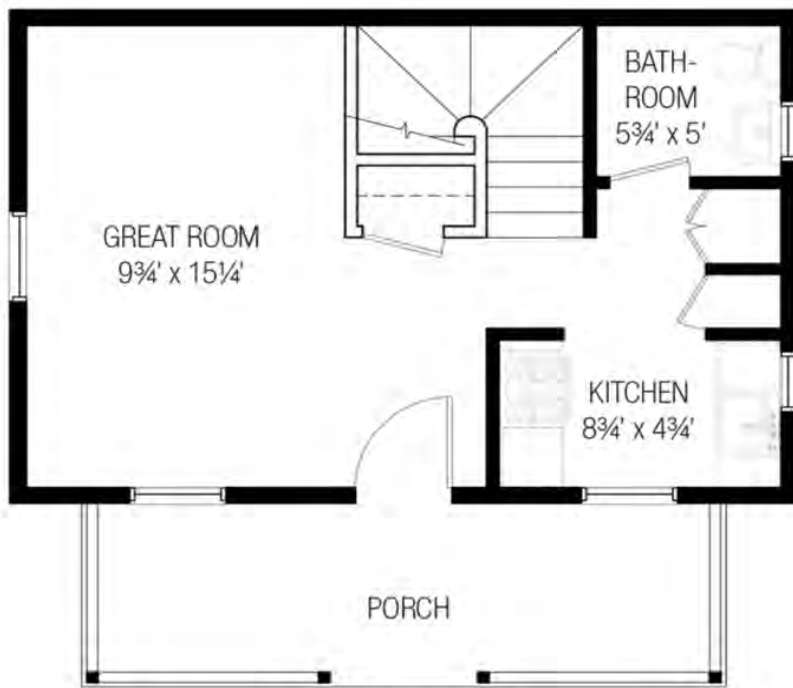


29. Tiny Home Plan: A 750 Sq.Ft Cottage

By: [Tumbleweed Tiny House Company](#)



This is one of Tumbleweed's largest homes. It can be built as a 2 (750 sq ft) or 3 (847 sq ft) bedroom house. The 3rd bedroom is an optional add-on that is on the first floor level. The top floor houses two additional bedrooms. Each story of the house is 7'6" tall at its peak. The upstairs bedrooms have sloped ceilings on the sides, and the closets are positioned in the lower ceiling space. The kitchen maximizes space and includes a dishwasher, full size range with oven, and built in microwave. The tank-less on demand water heater ensures that you never run out of hot water, and tucks away completely out of view. A stacking washer and dryer flank the kitchen. A small fireplace is tucked nicely in the corner of the great room. This house is not designed to be portable. The house plans come with a post and pier foundation, however it is possible to put this house on a slab foundation or even over a basement.



1st Floor



2nd Floor

30. Tiny Home Plan: A 261 Sq.Ft Plan

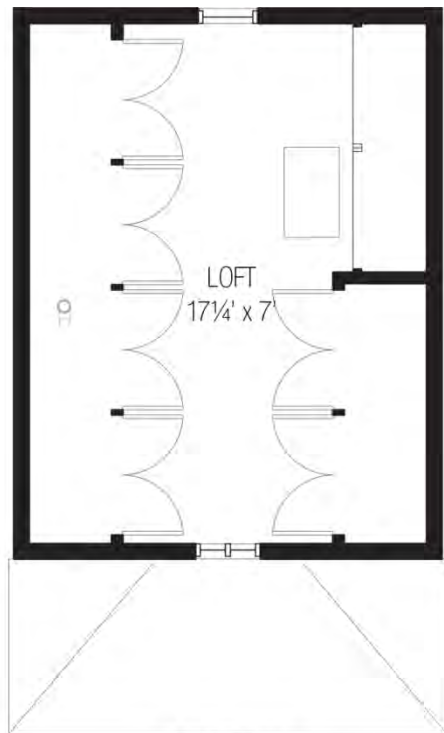
By: [Tumbleweed Tiny House Company](#)



This cozy cottage has a fireplace, a full bath, kitchen and also has the option for an add on bedroom. Designed with cost savings in mind, this green design is proportioned just right. Charming and bright, the simple use of space and building materials keeps construction costs low without sacrificing design. The plans come with an option for a full loft over the great room, kitchen and bathroom, or a 1/2 loft with a cathedral ceiling over the great room. We don't count the loft as square footage in this house because with so much sloped ceiling, it doesn't officially qualify as a habitable room. Subsequently, with seven feet of ceiling height over more than 50 square feet, the loft provides a lot of usable space. The loft is accessed by a ladder in the kitchen. The kitchen maximizes space and includes a dishwasher, full size range with oven, and built in microwave. The tank-less on demand water heater ensures that you never run out of hot water, and tucks away completely out of view. A small fireplace is tucked nicely in the corner of the great room. The smaller version has a washer/dryer combo in the kitchen, whereas the larger version has a stack-able washer and dryer closet.



1st Floor



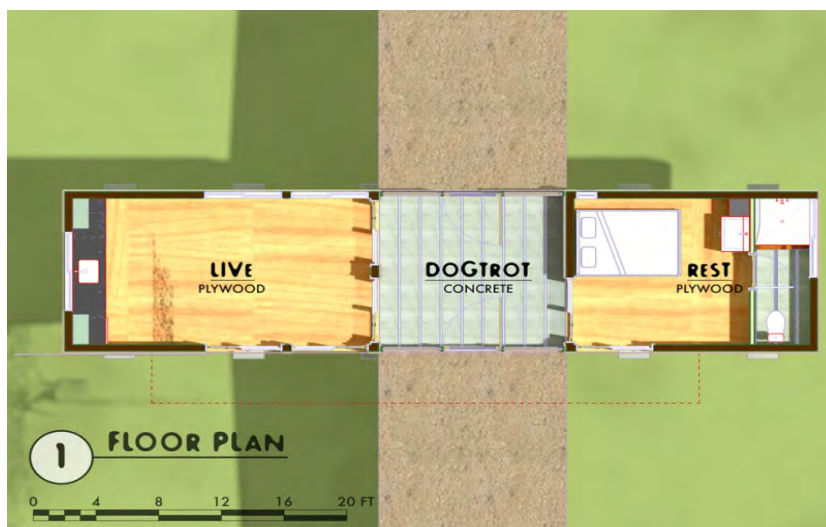
2nd Floor

31. Tiny Home Plan: A 432 Sq.Ft Modern Cabin

By: [Francois Levy](#)



This modern cabin is ideal as a weekend or vacation chalet, secondary structure, or studio. A screened-in dogtrot serves both as outdoor living space and circulation between the two conditioned ends of the building. Like other designs by the Architect, the long, narrow aspect ratio is designed for best energy performance in summer and winter and works well on a small or narrow lot. Originally designed for site with considerable terrain slope, the foundation can be adjusted to accommodate most sites, while the cantilevered ends reinforce the "floating" architecture. Ample south-facing glazing passively heats the spaces in winter, while the pitch and overhang of the southern awning can be altered in design to optimize summer shade. The exterior rolling barn door can be positioned to shade the dogtrot or either living space.

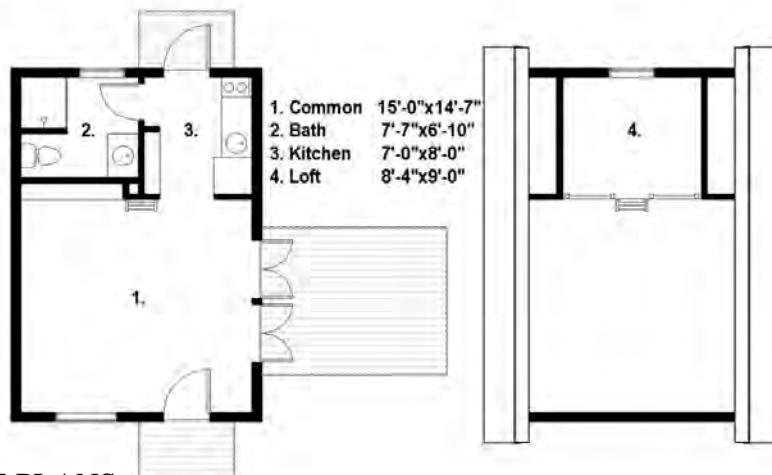


32. Tiny Home Plan: A 525 Sq.Ft Rustic Plan

By: [FreeGreen](#)



The Tiny Rustic House Plan was designed for those with an open lot and a need for a small shelter space. From a cheap vacation cabin to that get away studio office that you always wanted this Tiny House Plan is a great rural solution. Also, for those DIY enthusiasts out there this house can become a great hobby to work on each time you escape to your get-away destination. This Tiny House Plan has vertical wood siding giving it a rustic feel perfect for an open lot of land in remote locations. As shown in our rendering an outdoor fireplace can be a great option to add to the exterior of this home for campfires and cookouts. In this design the side porch offers great access to this outdoor fireplace and creates a nice space for sitting outside and taking in nature. This home has been designed to have a simple exterior allowing its surroundings to become the focal point, as this home blends in well with natural wooded areas.



33. Tiny Home Plan: A 832 Sq.Ft Cottage

By: [Katrina Cottage Designers](#)



Designed By Marianne Cusato This 1-bedroom, 1-bathroom Katrina Cottage is designed to be accessible to someone in a wheelchair. The bedroom with windows on two walls maximizes daylight. An optional second bedroom and bathroom open off the living room. The front porch is 8-feet-deep, which is so it can be used for sitting and entertaining. There is a side entry off the kitchenette. The design works well as a starter home that can be expanded over time.

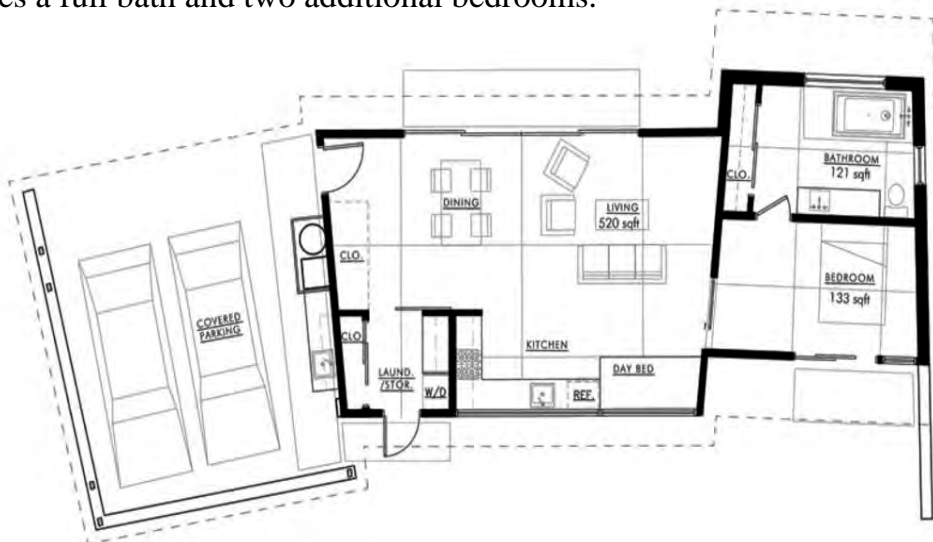


34. Tiny Home Plan: A Contemporary 860 Sq.Ft Cottage

By: [Feldman Architecture, Inc](#)



The Princeton's graceful design would be as perfect in a mountain setting as it would be in a tree-lined neighborhood. The wrap-around rafter porch is a charming addition to the exterior of the home, while the connected garage provides comfort and convenience. Inside, the dining/living room is adjacent to the kitchen and there is a full bath located between the master bedroom and an additional bedroom or office. Dormers on the upper floor allow light to fill the upstairs as well as the cathedral ceiling living room. The second floor also features a full bath and two additional bedrooms.



35. Tiny Home Plan: The Desert Shelter

By: [Off Grid Shelters LLC](#)



The Desert Shelters was designed with hot dry climates in mind. A slab on grade foundation and stucco siding is standard with this shelter design package. Additional siding options are available for this design and include fiber cement panels or corten steel siding. Exterior walls are constructed from 2x6 studs with spray foam cavity insulation, providing superior thermal resistance to the elements. The roof construction consists of exposed beam and decking with six inches of rigid foam board insulation and a white rubber roofing finish. Rubber roofing was chosen for its durability and affordability. Because of the low slope of the roof, the roofing finish will not be visible from the ground and is ideal for mounting solar panels. plans also include a solar PV system design, rainwater harvesting system design and a full material list. This house plan also includes a solar PV system design, rainwater harvesting system design and a full material list.

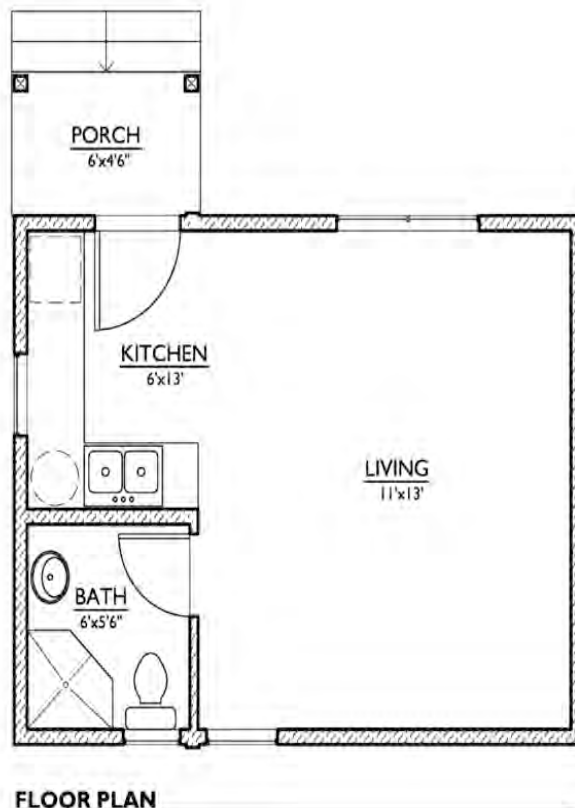


36. Tiny Home Plan: A 320 Sq.Ft Micro-cottage

By: [Nir Pearlson](#)



This 320 sq. ft. micro-cottage includes an L-shaped kitchenette and a full bath: the main space combines living and sleeping. The design works as a studio and as a backyard cottage.



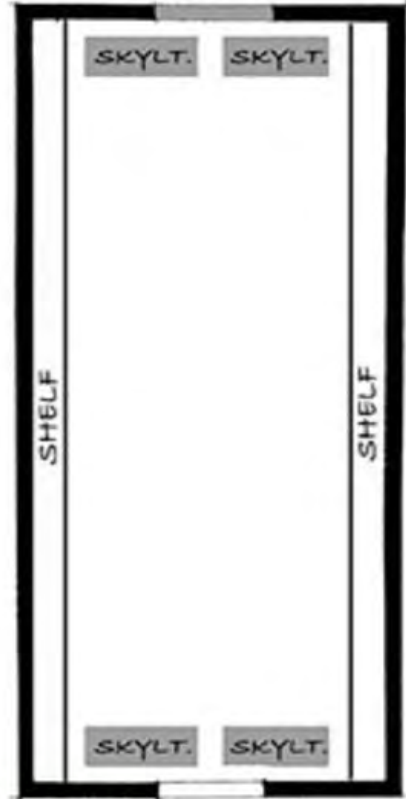
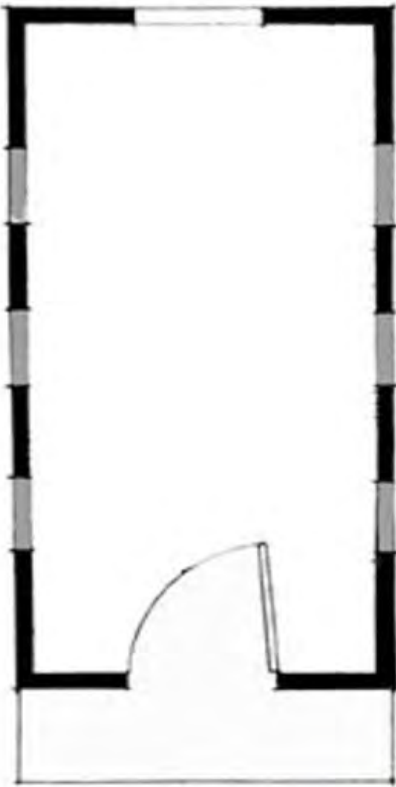
37. Tiny Home Plan: The Gifford

By: [Four Lights Tiny House Company](#)



The Gifford is the design of Jay Shafer's own house. It's a stunning 7' x 16' structure squarely rooted in the American Craftsman Style. It has been beefed up where beefing up was necessary for a sense of mass and fortification, and it has been pared down everywhere else. It has a standing seam, metal roof, cedar board-and batten siding and a tiny integral porch that's good for staying dry as you perch or fumble for your keys. The interior is all knotty pine. The cathedral ceiling is 9' 8" tall at the peak. When you enter it, you enter into a relatively narrow space that opens into a relatively huge space with a cathedral ceiling to increase the sense of mass and fortification.





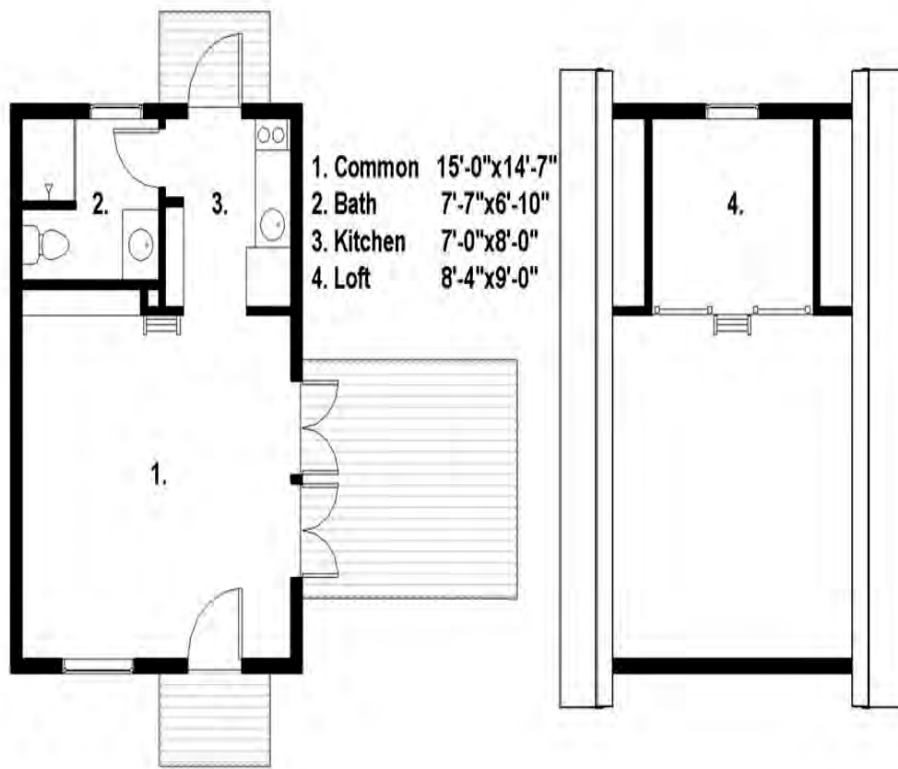
-  **Standard Windows**
-  **Optional Windows**

38. Tiny Home Plan: The Traditional House Plan

By: [FreeGreen](#)



The Tiny Traditional House Plan has been developed to fit into an urban or suburban situation. A perfect use for this house plan could be that extra office space that you always wanted. With more and more people working from home we it has become extremely important for home owners to actively separate their work environment from their home living space. This Tiny Traditional House Plan is a great way to give you some separation while still staying true to the aesthetic concepts that are welcome in most communities. This Tiny House Plan has horizontal lap siding giving it a traditional feel perfect for suburban or urban lot locations. This homes clean, but attractive features have been designed to allow it to easily coexist in most suburban and many urban environments. This open floor plan represents a perfect use of efficient space. The common area acts as a palette for you to fill. Whether this home is being used as an office space, studio, apartment, or cabin, it is up to you on how to use this area to fit your needs. The kitchen is small but functional for those necessary energy breaks, or morning breakfast meals. The bathroom works well providing ample space for showering and freshening up. Finally, the loft space is a perfect crash pad with ample space for a bed, nightstand, or even as it's own separate work space.

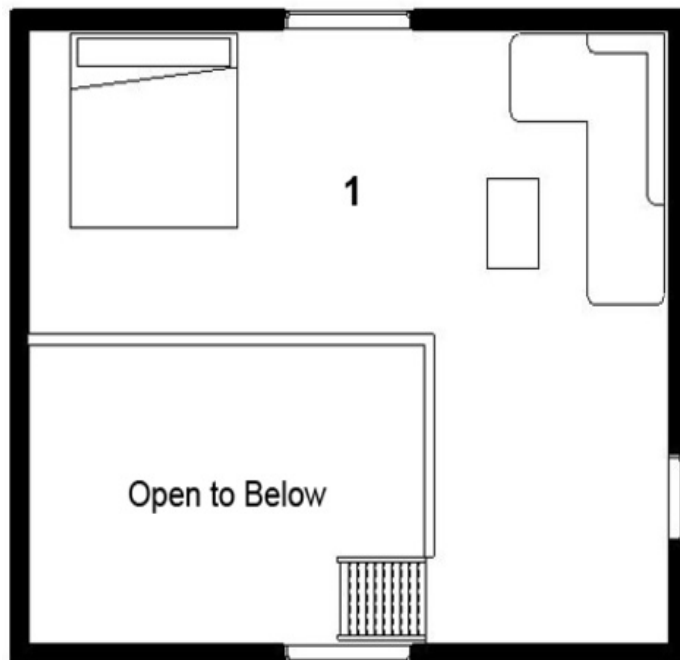
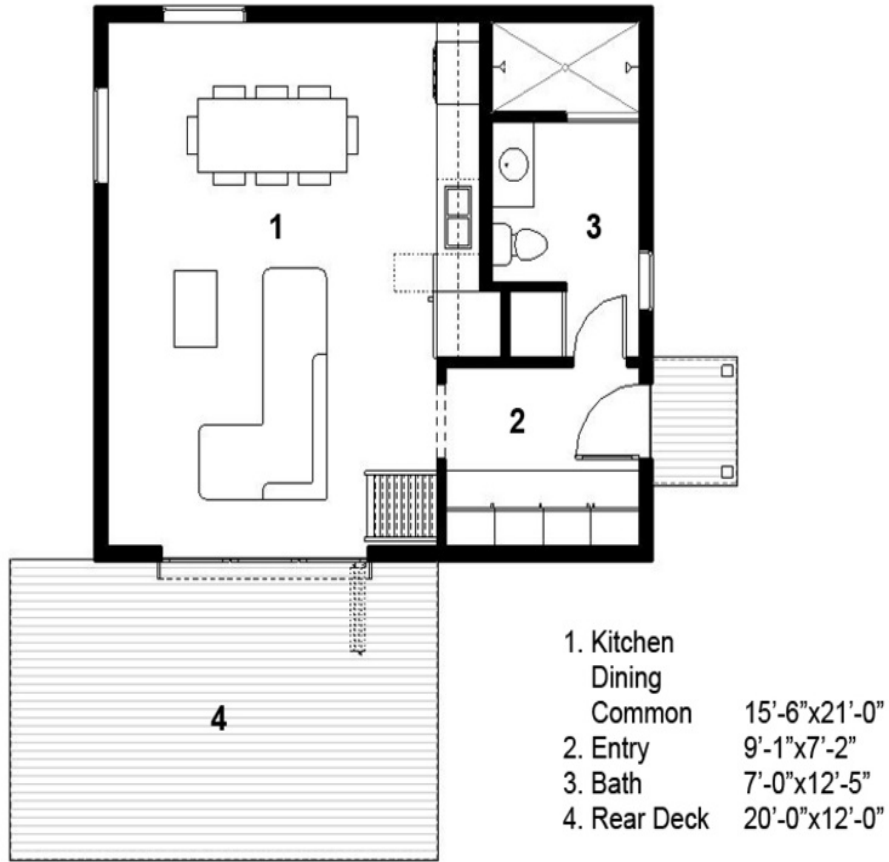


39. Tiny Home Plan: A 972 Sq.Ft Cottage

By: [FreeGreen](#)



This cottage is a modest little home with loft sleeping quarters, a large bathroom with a two person walk in shower and a common living space for cooking, dining and lounging. Although this is a small home under 1000 square feet it does seem much more spacious due to its high cathedral ceilings and open loft above the entry level. There is something different about this cottage that gives it contemporary appeal while maintaining classic charm. Its classic features such as a small footprint, traditional roof line and compact details like exterior window shades and lattice are in harmony with the more modern finishes such as fiber cement panels and standing seam metal roofing. The entry has a bench for taking off or putting on shoes and also plenty of storage for coats, dog leashes, umbrellas, shovels, brooms and cleaning supplies. Having all of this utility space right near the entry helps keep the rest of the home clean and clutter free. The large common room opens up to the loft above or out to the deck through the large folding doors. This cottage is an ideal home for small or rural lots and can comfortably accommodate 1-2 people. The loft space is a large open area of floor space that can serve many functions depending on your lifestyle.

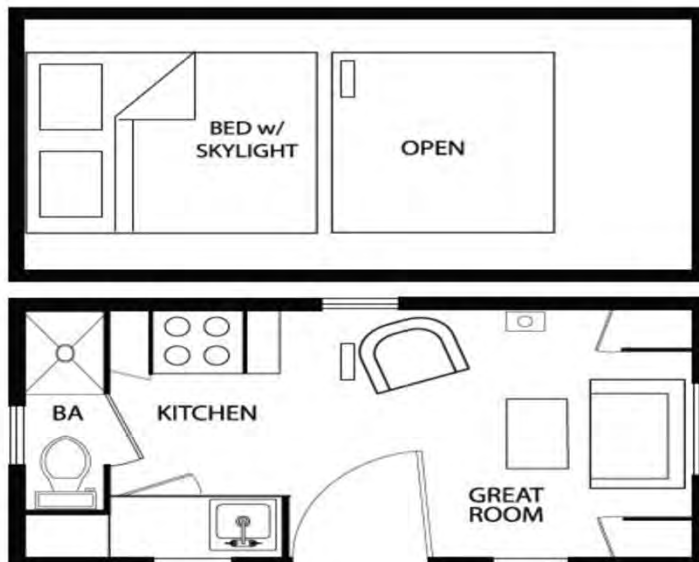


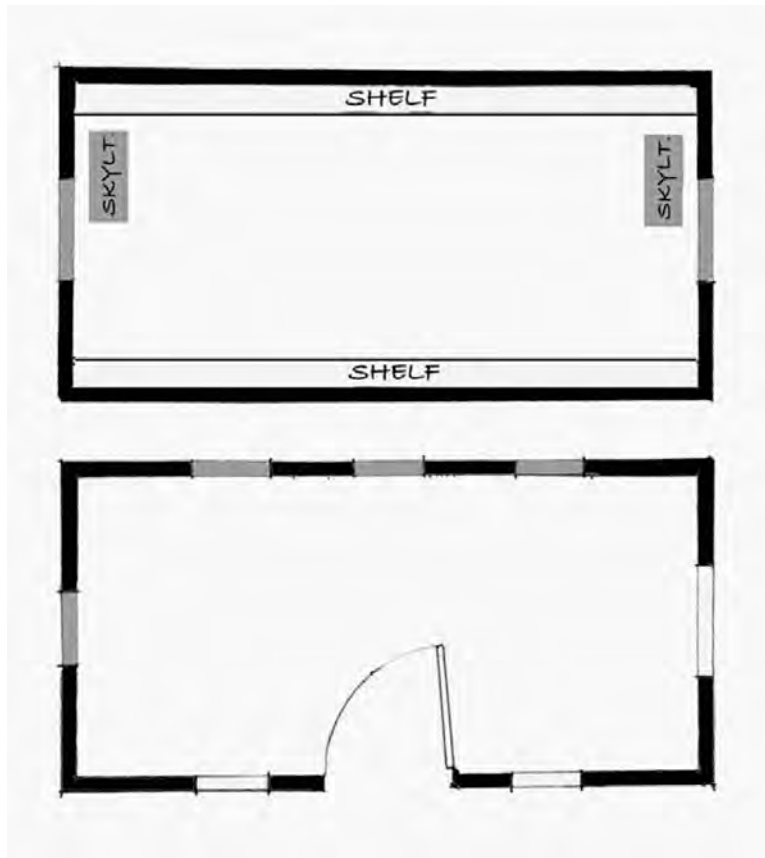
40. Tiny Home Plan: A 98 Sq.Ft Home

By: [Four Lights Tiny House Company](#)



At 14' x 7', this beautiful little house is our smallest, most affordable, and easiest to build. Two beefy purlins flanking the front door support a gable awning on the structure's long side. A sense of mass and fortification inside make this one a favorite amongst fans of the traditional Craftsman Style. The Zinn has a standing seam metal roof and can be clad in clapboard or board and batten siding. The interior is all knotty pine. The cathedral ceiling is 9' 8" tall at the peak. As a shell, it accommodates any of the components listed on the Compact Furnishings page and more. The bathroom's interior is 21" wide x 53" long. The great room is 96" x 83" and the sleeping loft is just 75" wide x 76" long x 33" high.



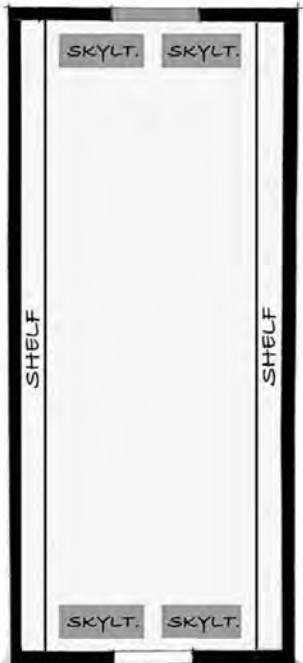
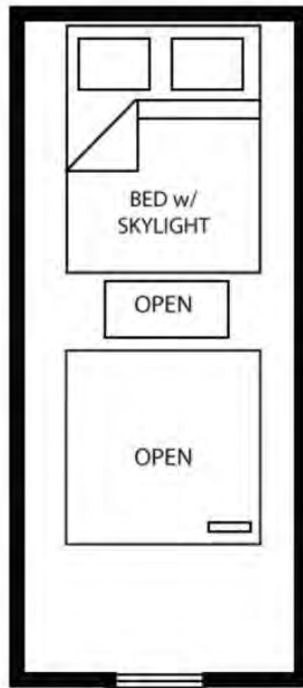
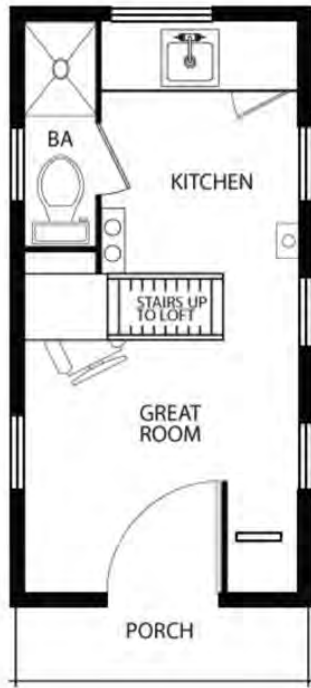


41. Tiny Home Plan: The Beavan

By: [Four Lights Tiny House Company](#)



The most notable distinction this house offers is the oversized, exposed truss above its integral porch. This shameless display of structural integrity, organic materials, and utility are derived from the Bungalow tradition that inspired the home. The more rustic elements of Craftsman style cabins and lodges are particularly evident. The Beavan has a standing seam metal roof, cedar board and batten siding, and a tiny integral porch that's good for staying dry as you perch or fumble for your keys. The interior is all knotty pine. The cathedral ceiling is 9' 8" tall at the peak. As a shell, it accommodates any of the components listed on the Compact Furnishings page and more. The Beavan Tiny House was selected as an "Editor's Choice" winner at MAKE Magazine's New York 2011 Maker Faire. The bathroom's interior is 21" W x 53" L; the great room's 6'-3" x 5'-8"; the kitchen is 6'-3" x 4'-4"; and the sleeping loft's just 75" W x 76" L x 33" H. Two skylights over the pillows make it feel much bigger. A stainless steel double-burner over a 3' tall cabinet in the kitchen. A Dickinson Marine fireplace keeps the place warm and cozy.

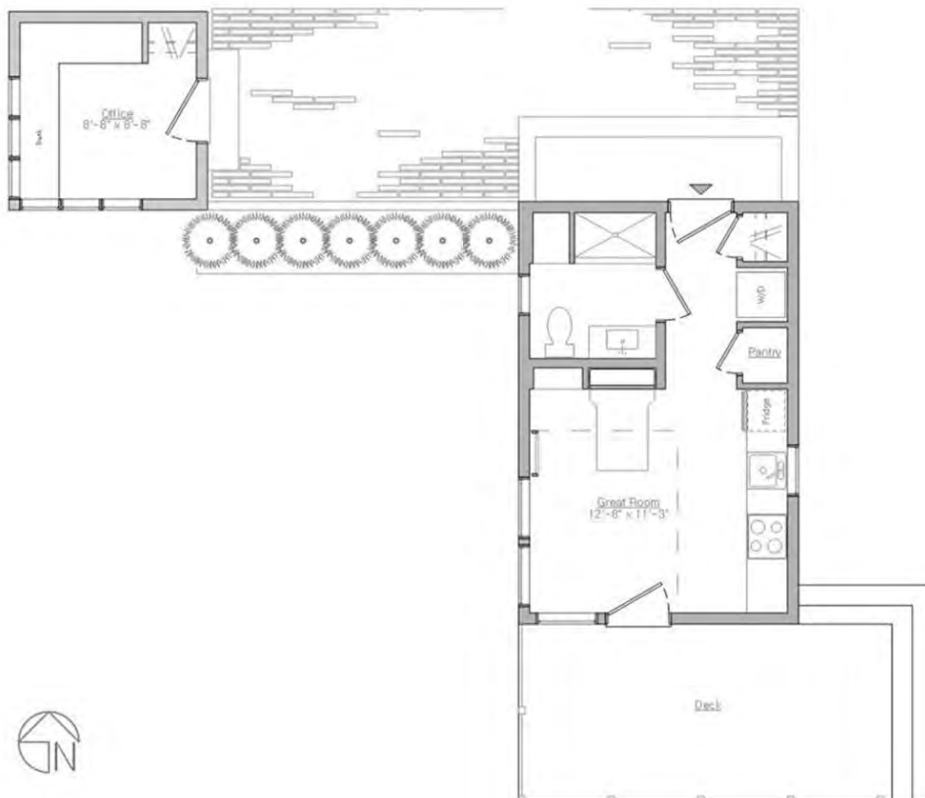


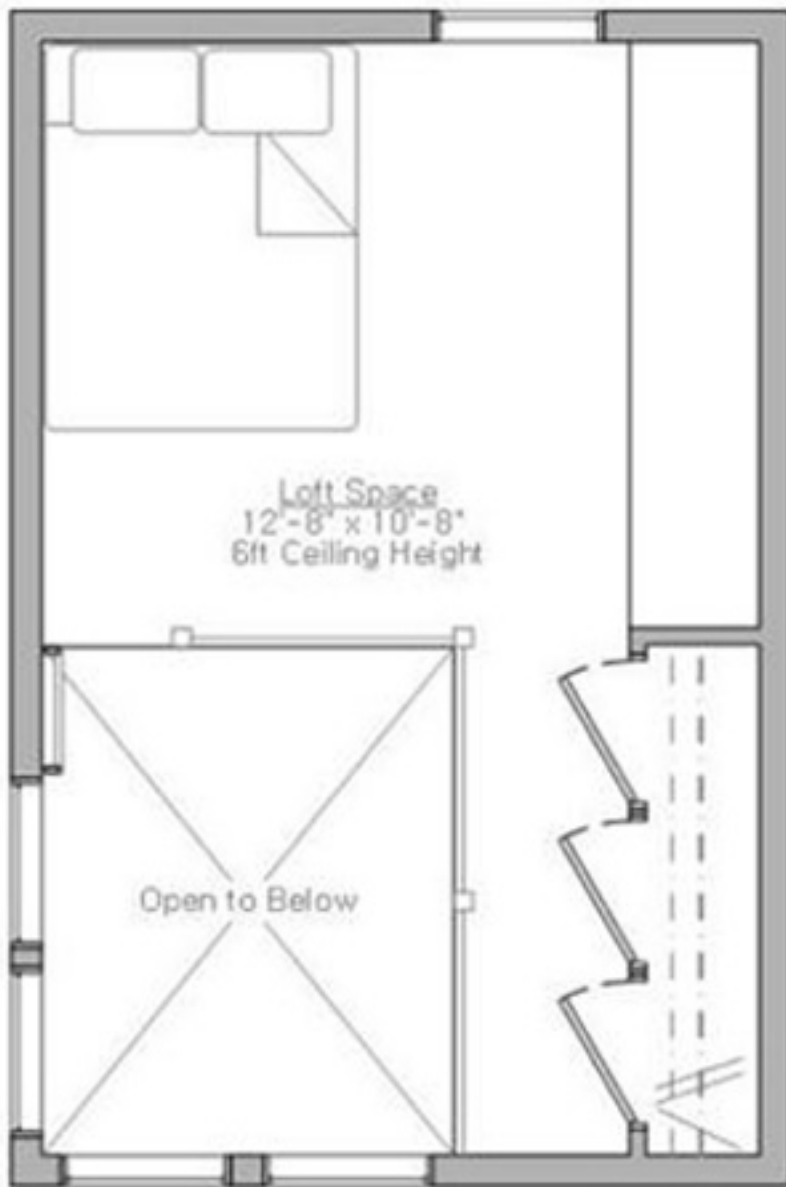
42. Tiny Home Plan: A 610 Sq.Ft Home

By: [Quiet Leap Designs LLC](#)



The plan features a first floor bathroom with sleeping in the 6' loft. This design also features a 10' x 10' separate office building for the work at home professional. The flat roof allows for simpler construction and the ability to place solar panels atop without the fuss of complex angling.



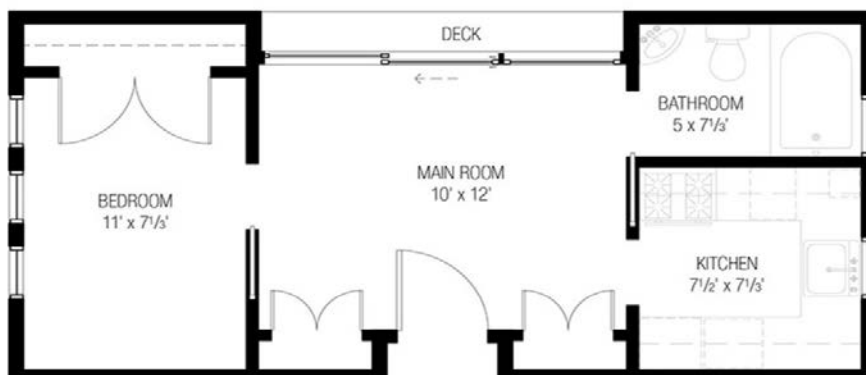


43. Tiny Home Plan: A 370 Sq.Ft Portable House

By: [Tumbleweed Tiny House Company](#)



This modern house is just 370 square feet and 9'6" tall from floor to roof top. Although it is not designed as a portable house, at only 14' wide it can be trucked down the road with a wide load permit. The house shown above is pictured with rolled hot steel siding. This is just one idea for a durable exterior finish that would match the modern design, but since you build it yourself, the choice is yours! The kitchen includes a dishwasher, full size range with oven, and built in microwave. The tank-less on demand water heater ensures that you never run out of hot water, and tucks away completely out of view. A combo washer/dryer are tucked in the kitchen as well. A small fireplace is tucked nicely in the corner of the great room. The house plans come with a post and pier foundation. However, it is possible to put this house on a slab foundation or even over a basement.



44. Tiny Home Plan: A 356 Sq.Ft Tiny Bungalow

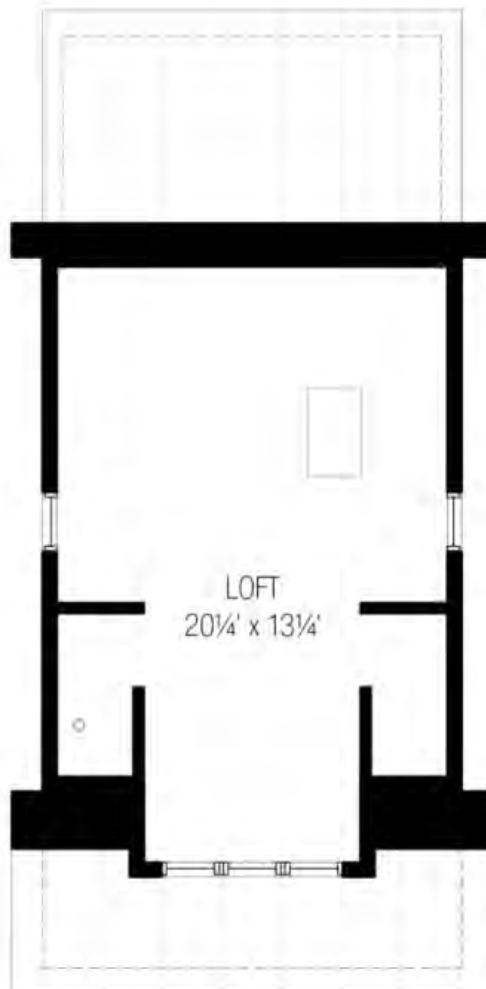
By: [Tumbleweed Tiny House Company](#)



Designed as a very tiny bungalow, this design comes with several options to suit your needs. You can choose between a sleeping loft upstairs, or a cathedral ceiling. We also have a smaller version without the downstairs bedroom at the back of the house. Designed with simplicity in mind, this home has an abundance of light, and yet is very simply designed. The kitchen maximizes space and includes a dishwasher, full size range with oven, and built in microwave. The tank-less on demand water heater ensures that you never run out of hot water, and tucks away completely out of view. A small fireplace is tucked nicely in the corner of the great room. The smaller version has a washer/dryer combo in the kitchen, whereas the larger version has a stack-able washer and dryer closet. We don't count the loft as square footage in this house because with so much sloped ceiling, it doesn't officially qualify as a habitable room. Subsequently, the loft can add over 100 feet of usable space, and it is accessed by a drop down stair ladder. At its highest point the loft is 6' 4" tall, which encompasses over 50 square feet of space.



1st Floor



2nd Floor

45. Tiny Home Plan: The Santa Barbara

By: [The Homestead Partners](#)



The Santa Barbara is one of six gorgeous little 400-square-foot houses in the California Collection created by The Homestead Partners. Each house has a full kitchen and bathroom, private bedroom with space for at least a queen-size bed, living/dining/kitchen that opens to an outdoor dining patio or terrace, and plenty of storage. Big enough to have a friend over. Just make sure you're in love with them first. Have your time machine plop you down wherever and whenever in Spanish California and you'll find magnificent adobe ranch houses, with or without Zorro and Sergeant Garcia. The style persisted for centuries, and then post-World War I developers transformed it into ubiquitous urban and suburban middle-class housing that still dots the southwest. Ours is both smaller and nicer than those, Spanish Colonial distilled so perfectly you'll expect Leo Carrillo to walk through the French doors from the patio with martini in hand. Interior Features 398 square feet Open living/dining room and full kitchen, with French doors opening to raised side patio, and entry door opening to raised front patio Cathedral ceilings with exposed rafters throughout Full bathroom Space for compact washer/dryer Bedroom sized for a king or queen bed, with built-in desk, storage, closet, and French doors opening to side patio Exterior Features 441 square feet Raised open-air patio at entry Raised side patio covered with open rafters Total Footprint 839 square feet .



46. Tiny Home Plan: A 356 Sq.Ft Cozy Cottage

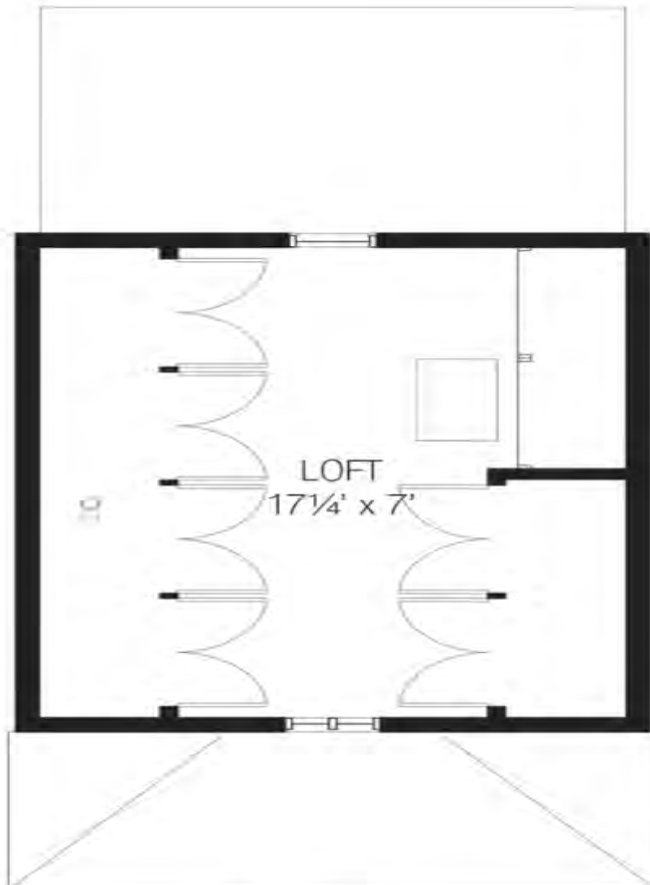
By: [Tumbleweed Tiny House Company](#)



This cozy cottage has full bedroom, a fireplace, a full bath and kitchen and also has the option for a studio, without the bedroom. Designed with cost savings in mind, this green design is proportioned just right. Charming and bright, the simple use of space and building materials keeps construction costs low without sacrificing design. The plans come with an option for a full loft over the great room, kitchen and bathroom, or a 1/2 loft with a cathedral ceiling over the great room. We don't count the loft as square footage in this house because with so much sloped ceiling, it doesn't officially qualify as a habitable room. Subsequently, with seven feet of ceiling height over more than 50 square feet, the loft provides a lot of usable space. The loft is accessed by a ladder in the kitchen. The kitchen maximizes space and includes a dishwasher, full size range with oven, and built in microwave. The tank-less on demand water heater ensures that you never run out of hot water, and tucks away completely out of view. A small fireplace is tucked nicely in the corner of the great room. The smaller version has a washer/dryer combo in the kitchen, whereas the larger version has a stack-able washer and dryer closet.



1st Floor



2nd Floor

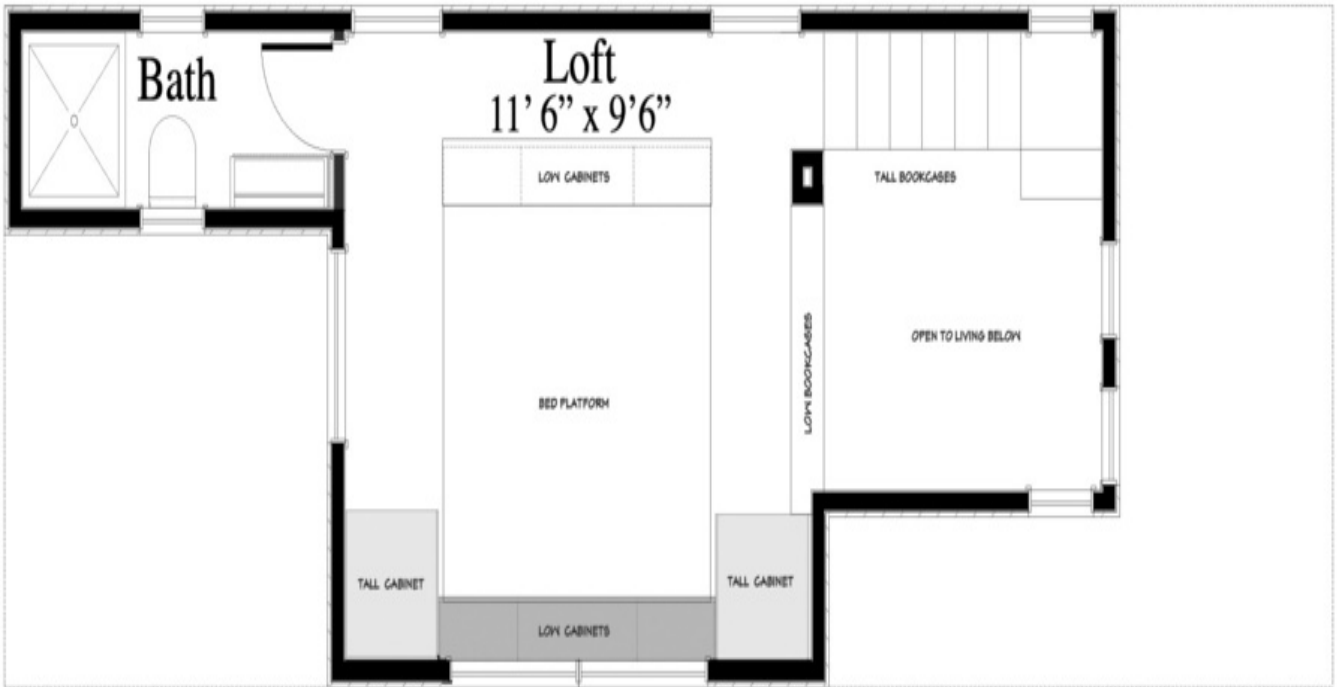
47. Tiny Home Plan: A 584 sq ft Modern Home

By: [The Homestead Partners](#)



Mid-century modern with subtle homages to R. M. Schindler and Charles and Ray Eames, this is also our most personal design. For decades we've been intrigued by Chinese puzzle interiors that perfectly combine sleeping, sitting, and working while leaving no square inch unused. This is our latest iteration; if you're looking for vertical space, stairs to climb or sit on, and a sleeping loft overlooking the living room (and we know you are), then this is your house.






48. Tiny Home Plan: The Forest Shelter

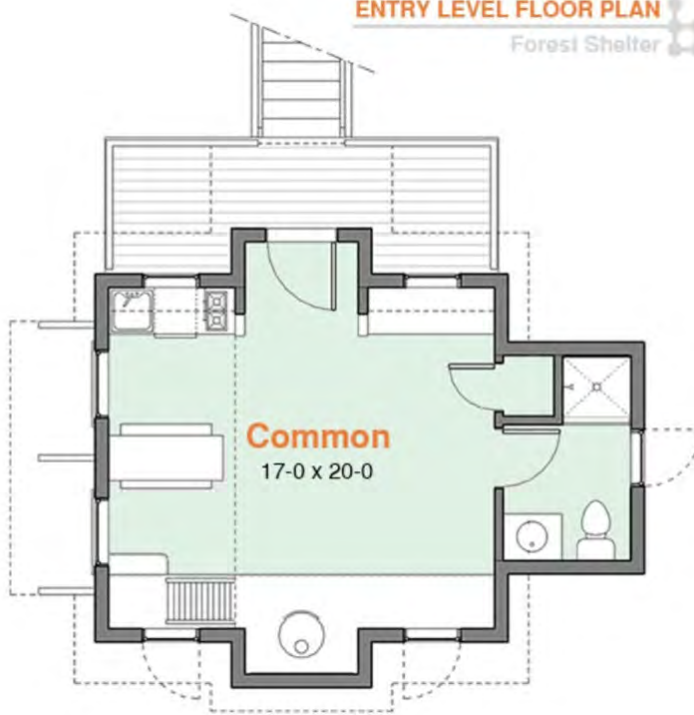
By: [Off Grid Shelters LLC](#)




The Forest Shelters was designed to work well in all climate zones. The steel pier foundation raises the entry level of the shelter high above grade to allow nature to be exist undisturbed below while providing ultimate stability and security. Cedar shingle siding is a standard option with this shelter design package. Additional siding options are available for this design and include clapboard or board and batten siding. Exterior walls are constructed from 2x6 studs with spray foam cavity insulation, providing superior thermal resistance to the elements. The roof construction consists of 2x10 rafters with nine inches of spray foam insulation. Both asphalt shingles or metal roofing are provide as roof finish options in this plan set. A loft bedroom sleeps 2-4 individuals. This design is ideal for roof mounted solar panels and rainwater harvesting. This house plan also includes a solar PV system design, rainwater harvesting system design and a full material list.

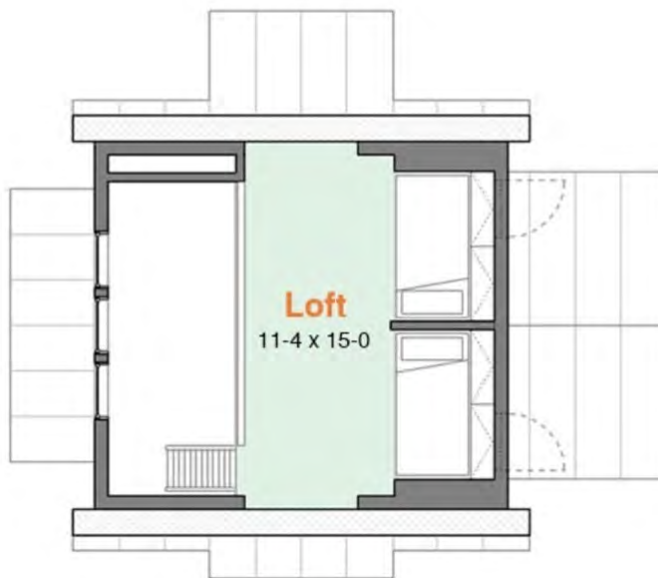
ENTRY LEVEL FLOOR PLAN

Forest Shelter 



UPPER LEVEL FLOOR PLAN

Forest Shelter 



49. Tiny Home Plan: A 261 sq ft Cabin

By: [Framework Design Collective](#)



The cabin is the tiny house version of the floating modern box. Raising the cabin on a pier foundation eliminates the need for a costly concrete slab and allows the landscape to flow underneath making this design ideal for sloped and uneven sites. The cabin can also be easily adapted to modular prefab building for delivery to remote locations. With the correct solar orientation a passive solar design can be achieved utilizing the deck canopy and slated wing walls to shade during hot summer months. The large deck and bank of sliding glass doors expand the interior living space to support a interior/outdoor lifestyle making the cabin excellent for relaxing and enjoying the view.



50. Tiny Home Plan: The Jungle Shelter

By: [Off Grid Shelters LLC](#)



The Jungle Shelter was designed with hot, humid climates in mind. A pier foundation and fiber cement panel siding is standard with this shelter design package. Additional siding options are available for this design and include stucco or shiplap wood. Exterior walls are constructed from 2x6 studs with spray foam cavity insulation, providing superior thermal resistance to the elements. The roof construction consists of exposed beam and decking with six inches of rigid foam board insulation. A thatch roof covering will protect the rubber roof finish below from harmful UV rays while adding aesthetic appeal. Rubber roofing was chosen for its durability and affordability. Mounting solar panels on the roof of this shelter is not feasible so a pole mounted array would need to be considered. This house plan includes a solar PV system design, rainwater harvesting system design and a full material list.

